

Big Fuse= Mouser PN 576-021506.3MXESPP

Small Fuse= Mouser PN 693-8020.0514.PT

1R80= Mouser PN 71-CRCW12101R80JNEAH

2R40= Mouser PN 754-RL1632R-2R40-F

R035= Mouser PN 652-CRF2512FZR035ELFV VBB4

Common Resistor= DigiKey PN 660-MFS1/2DCT52R16R2 MOUSER PN 660-MFS1/2DCT52R16R2

PMIC 2PCS02

3 leg 2A 650v fet Mouser PN 757-TK2A65DSTA4QM

3 LEG 2A 600V FET MOUSER PN 512-FCPF190N60E

N-CH 620V FET DPAK Q9 2115 DIGIKEY PN 497-8478-1-ND (STD3N62K3)

FET TK5P65W MOUSER PN 652-CRS0805JX100ELF

1612A1

DDA001AG

HR1001C

ZENER DIODE MOUSER PN 78-TZX8V2B

331 IC MOUSER PN 667-ERA-2ARB331X

IR80 IC MOUSER PN 71-CRCW12101R80JNEAH

DAS001

DAP041

PSU 1215A

ADP-200ER-Silver Screw

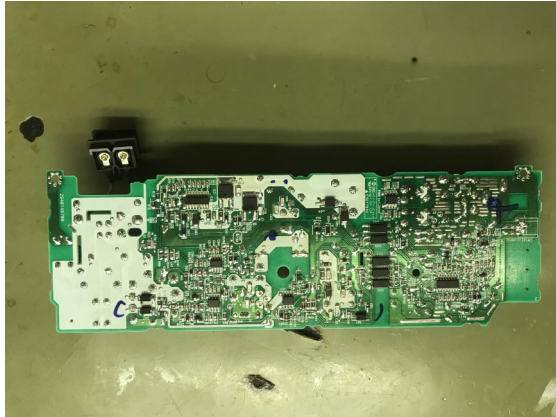
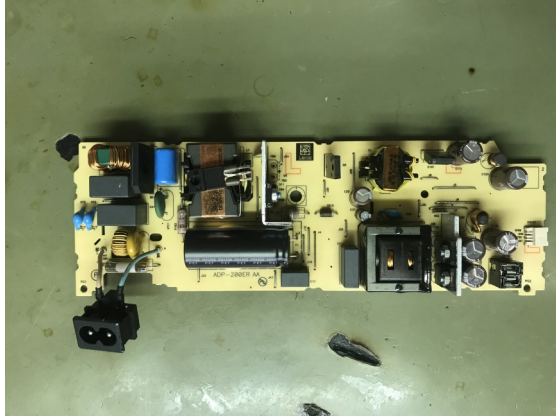
Notes:

24N60M2=600v

3N62K3=620v Use 650v FET

K2A65D=650v Use 600v FET

DDA001AG-Main Power IC if **no power replace** this ic



PSU 1215B

N14-200P1A-Black Screw

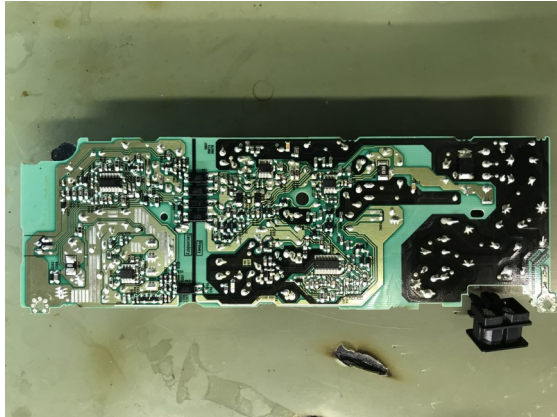
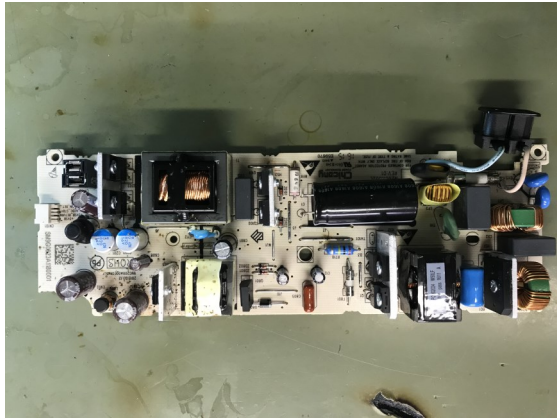
Notes:

LD5760PGR– 3 Leg IC (Main Power) (compatible with DAP041)

6R190E6=600v Use 600v FET= [Mouser # 512-FCPF190N60E](#)

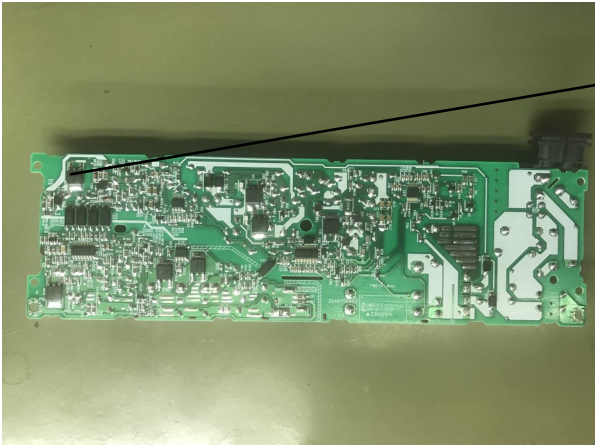
FCPF190N60E= 600v Use 600v FET= [Mouser # 512-FCPF190N60E](#)

K2A65D=650v [Use 600v FET= Mouser # 512-FCPF190N60E](#)



PSU 2015A

ADP-160 CR-Silver Screw

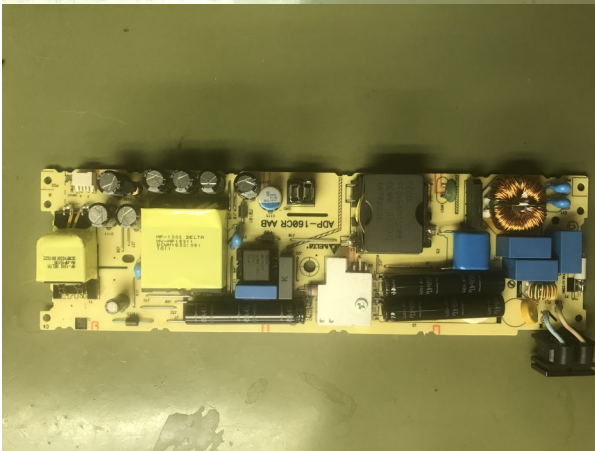


N-Ch Mosfett 3N62K3=620V 2.7A or

N-Ch Mosfett TK4P60DA=600V 3.5A

DDA001AG-Main Power IC if no power replace this ic

24N60M2=600v== [Mouser # 512-FCPF190N60E](#)



PSU 2015B

N15-160P1A-Black Screw

24N60M2=650v

TK4P60DA=600v

6R190P6=600v

Notes:

LD5760PGR- 3 Leg IC (Main Power) (compatible with DAP041)

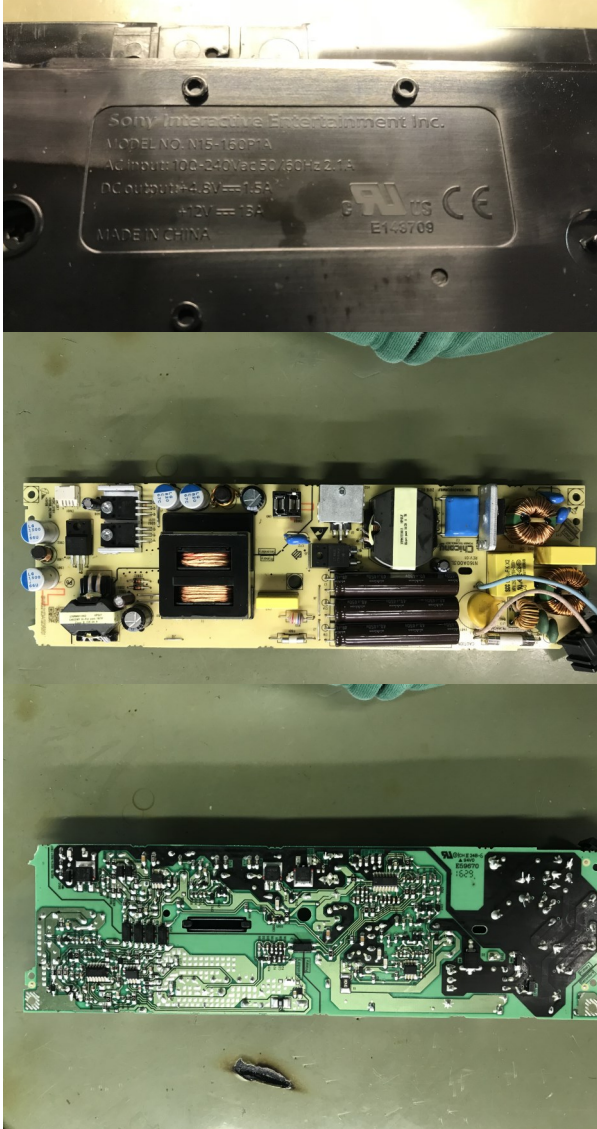
2PCS02—If half power, replace this ic

DDA001AG-Main Power IC if no power replace this ic

1608B IC 8 LEG IC (POWER) half Power, replace

3N62K3 (70SL1K4A)=620v FET Digikey # 497-8478-1-ND

HR1001 Replace if half power



PSU 2115

N16-160P1A Black Screw



<<<2015 and 2115 have different connectors

LD5760JGR 3 Leg IC Replace with DAP041 3 Leg IC

MPS1713 (MPS1613)(MPS1712) (HR1001C) Power IC Replace if no power

24N60M2 = 600V Fet Mouser PN 512-FCPF190N60E

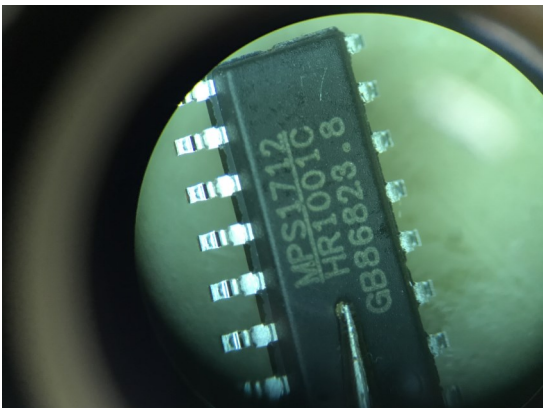
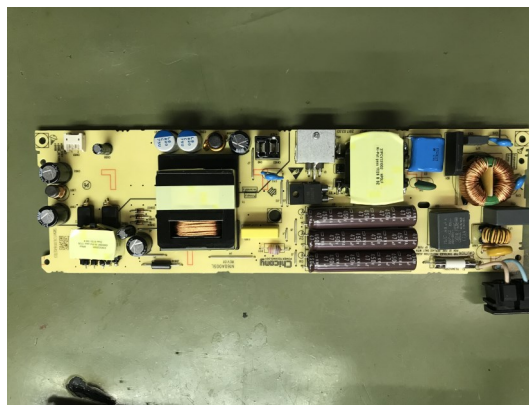
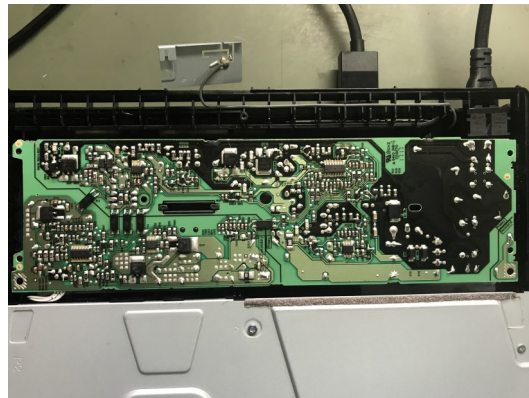
6R190P6 = 600v Fet Mouser PN 512-FCPF190N60E

R6020 = 600V Fet Mouser PN 512-FCPF190N60E

70S600P7 = 700V = Use 620V n-ch Mosfet digikey PN 497-8478-1-ND

70SL1K4A = 700V = Use 620V n-ch Mosfet digikey PN 497-8478-1-ND

60S650CE=650V Dpak IPD60R650CE,IPA60R650CE



No Power, half power, replace HR1001C

Check all Zener Diodes none should have continuity, top ZD needs to be removed to check

PSU 2115

ADP-160ER-Silver Screw



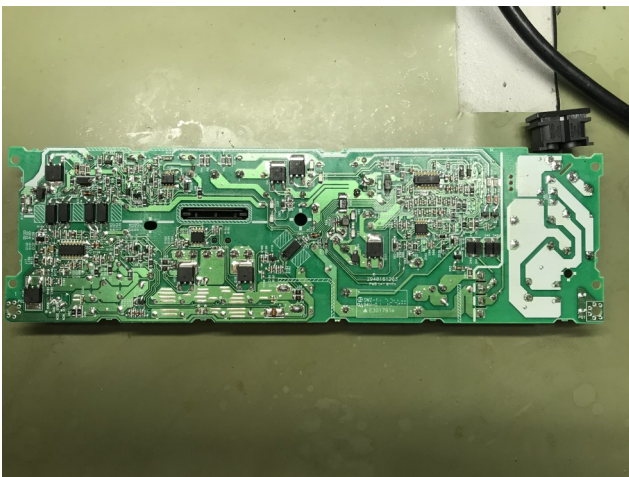
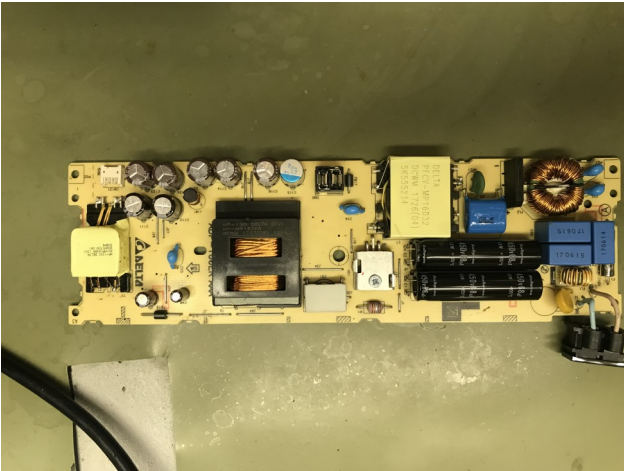
DAP049= N/A for purchase

DAP046=DAP041

1612A3=1612A1 same ic

3N62K3 =620V N-Ch DPAK digikey PN 497-8478-1-ND

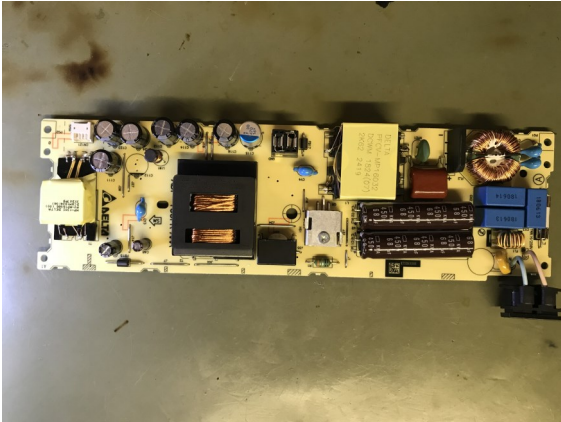
65C61K4=650V USE 620V N-Ch DPAK digikey PN 497-8478-1-ND



PSU 2116

ADP-160FR Silver Screw

Same as 2115



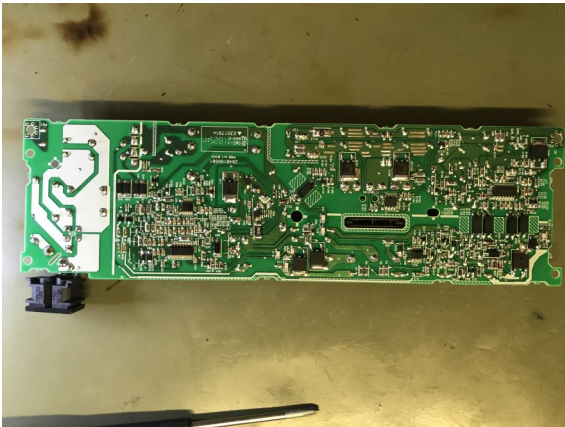
DAP049= N/A for purchase

DAP046=DAP041

1612A3=1612A1 same ic

3N62K3 =620V N-Ch DPAK digikey PN 497-8478-1-ND

65C61K4=650V USE 620V N-Ch DPAK digikey PN 497-8478-1-ND



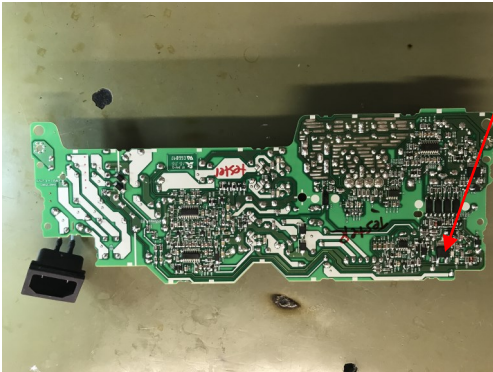
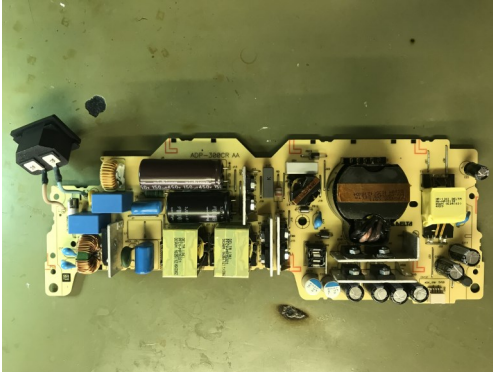
PSU 7015B

ADP-300CR

Notes:

3N62K3 =N Ch Mosfet 620V Digikey# 497-8478-1-ND

DAP041 =yoycart.com



PS4 1115 BDP Drive Board

If Drive wont accept or eject disc, check these fuses first

F201, F202, F203, F501

