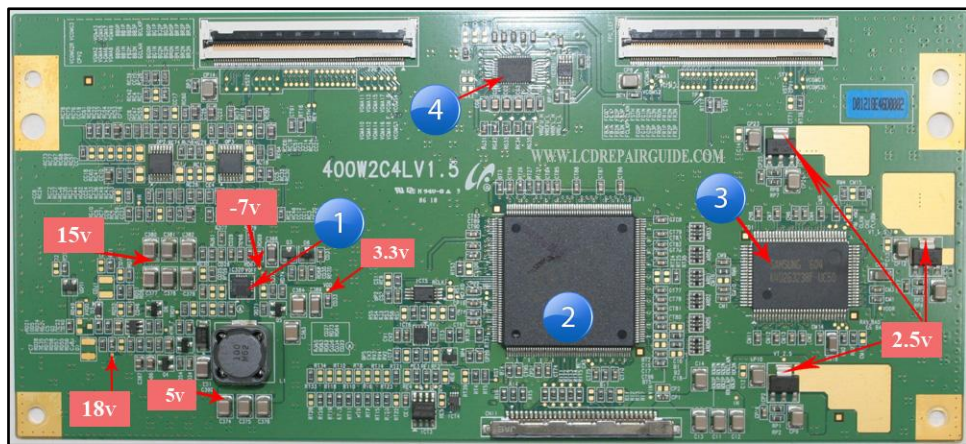


Collection of T-CON Board Repairing Information



“by Kent Liew”

<http://www.LCDRepairGuide.com/Screen-Repair/>

You CANNOT give this E-book away for free.

**You DO NOT have the rights to redistribute this
EBook.**

Copyright @ All Rights Reserved

Warning! No part of this E-book/guide may be reproduced or transmitted in any form whatsoever, electronic, or mechanical, including photocopying, printing, recording, or transmitting by any informational storage or retrieval system without expressed written, dated and signed permission from the author. You cannot alter, change, or repackage this document in any manner.

Disclaimer And/ Or Legal Notices

The reader is expressly warned to consider and adopt all safety precaution that might be indicated by the activities herein and to avoid all potential hazards. This E-Book is for INFORMATIONAL PURPOSES only and the author do not accept any responsibilities or liabilities resulting from the use of this information. While every attempt has been made to verify the information provided here, the author cannot assume any responsibility for any loss, injury, errors, inaccuracies, omissions or inconvenience sustained by anyone resulting from this information. Most of the repair tips and solution given should only be carried out by suitable qualified electronics engineers/technicians. Please be careful as all electrical equipment is potentially dangerous when dismantled. Any perceived slights of policy, specific people or organizations are unintentional.

Limit of Liability/ Disclaimer of Warranty:

The author and publisher of this E-book and the accompanying materials have used their best efforts in preparing this program. The authors and publisher make no representation or warranties with respect to the accuracy, applicability, fitness, or completeness of the contents of this program. They disclaim any warranties (expressed or implied), merchantability, or fitness for any particular purpose. The reader is expressly warned to consider and adapt all safety precautions that might be indicated by the activities here in and to avoid all potential hazards. By following the instructions contained herein, the reader willingly assumes all risks in connection with such instructions. The authors and publisher shall in no event be held liable for any loss or other damages, including but not limited to special, incidental, consequential, or other damages. As always, the advice of a competent legal, tax, accounting or other professional should be sought.

No this parts of this E-book/Guide/Manual shall be reproduced or transmitted by any means, electronic, mechanical, photocopying, printing and recording or otherwise . Any unauthorized use of this material is prohibited. All product illustration, product names and logo are trademark of their respective manufacturers.

If you have any information regarding the illegal reselling or duplication of the E-book, please report it to fastrepairguide@gmail.com for your reward.

Table of Contents

AUO

T260XW01	7
T296XW01-007	8
T296XW01-011	9
T315XW01	10
T370XW01	11

CHIMEI (CM/CMO/CMI)

V260B1-C01	12
V296W1-C1 X7	13
V315B3-C01	14
V320B1-C03	15
V420H1-C07	16

CPT

CPT320WAC01C	17
--------------------	----

HITACHI

19-100056	18
97-29925-0	19
97-390310	20

LG.Philips

LC260W01-A5 (6870C-0011D)	21
LC260WX2 (6870C-0036D)	22
LC260WX2-SLB3 (6870C-0079C)	23

LC300W01-A3 (6870C-0002C) 24

LC300W01-B5 (6870C-0009C) 25

LC320W01-SLA1 (6870C-0142B) 26

LC320WX3 (6870C-0087A) 27

LC320WXN-SAA1 (6870C-0195A) 28

LC370W01-A5K1 (6870C-0024A) 29

LC370WX1 / LC320W01 (6870C-0060F) 30

LC370WX1-SLA1 (6870C-0088D) 31

LC370WX4-SLA1 (6870C-0158A) 32

LC420W02-B6 (6870C-0046B) 33

LC420WUN-SAA1 (6870C-4200C) 34

LC420WX5-SLA1 (6870C-0113A) 35

LC420WX7 (6870C-0150B) 36

LC470WU4-SLA1 (6870C-0120C) 37

LC520WU1-SLA1 (6870C-0152A) 38

LC520WU1-SLB1-G31 (6870C-0175C) 39

SAMSUNG (S-LCD)

260W2C4LV1.0..... 40

260W2C4LV1.6..... 41

320W2C4LV1.4..... 42

320W2C4LV6.4..... 43

320WTC4LV1.0 44

320WTLF3C2LV0.3 45

400W2C4LTV0.146
400W2C4LV1.5.....47
460WSC4LV0.148
460WTC4LV5.049
4046HDCP2LV0.650

SHARP

CPWBX3255TPZ51
CPWBX3749TP52
X3219TPZ53
X3562TP ZE54

If you want to buy:

Testing Equipment, Tools and Spare Parts

Please visit to the page here:

<http://www.LCDRepairGuide.com/tools/>

All these tools and equipments will help you in troubleshooting and repairing the electronic devices.

Please visit the Resources Page to get more useful repairing information at:

<http://www.lcd-television-repair.com/newsletter/Recommend.html>

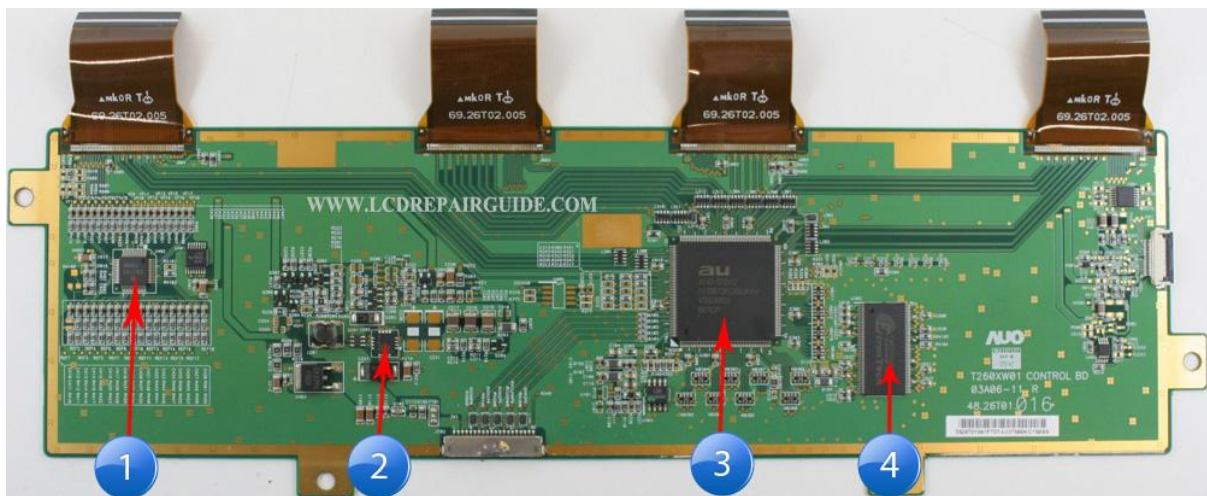
<http://www.LCDRepairGuide.com/Screen-Repair/>

AUO (AU Optronics Corp)

1) **T-con Board:** T260XW01

LCD Panel Model: 26 inches Panel

Note: Vcc input= 5V



1) U402= AN1702 IC. If this IC failure, it will cause the TV No Display.

2) U202= MAX1889E power management IC (DC-DC circuit IC). If this IC failure, it will cause the TV No Display.

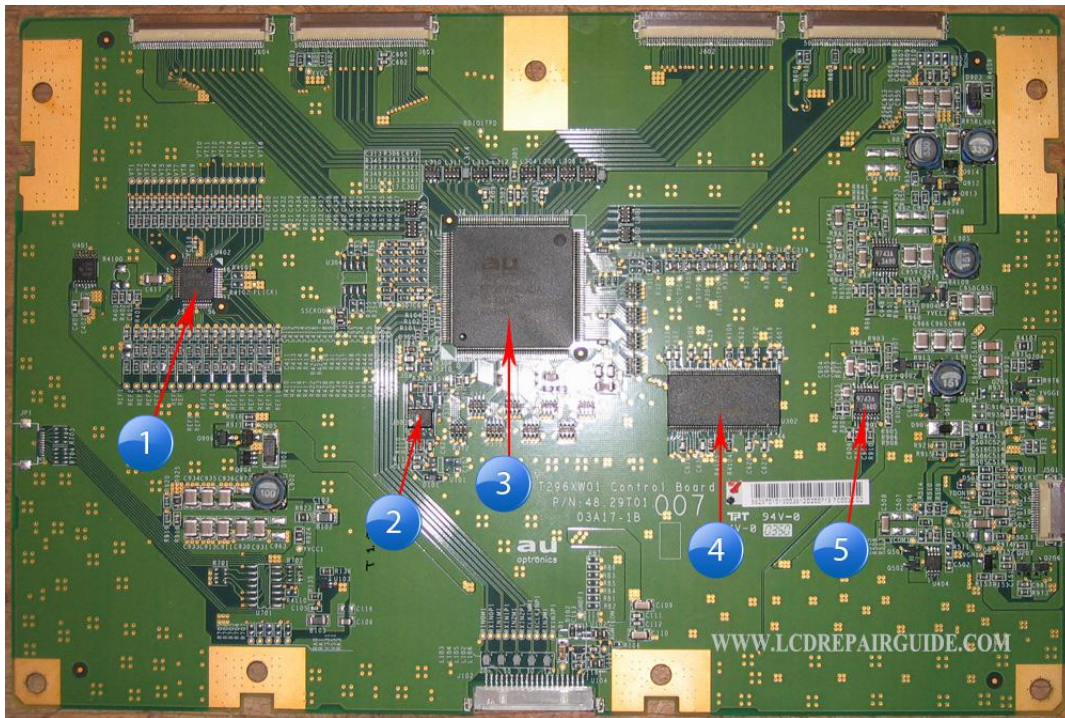
3) U301= FPD87352AU. If this IC failure, it will cause the TV No Display or Display Distortion problem.

4) U302 SDRAM memory IC. If this IC failure, it will cause the TV No Display or Display Distortion problem.

2) **T-con Board:** T296XW01-007

LCD Panel Model: 30 inches Panel

Note: Vcc input= 12V



1) U402= AN1702 IC. If this IC failure, it will cause the TV No Display.

2) U303 EEPROM IC. If this IC failure, it will cause the TV No Display or White Screen problem.

3) U301= FPD87352B. If this IC failure, it will cause the TV No Display or Full Screen of Vertical Lines/Bars.

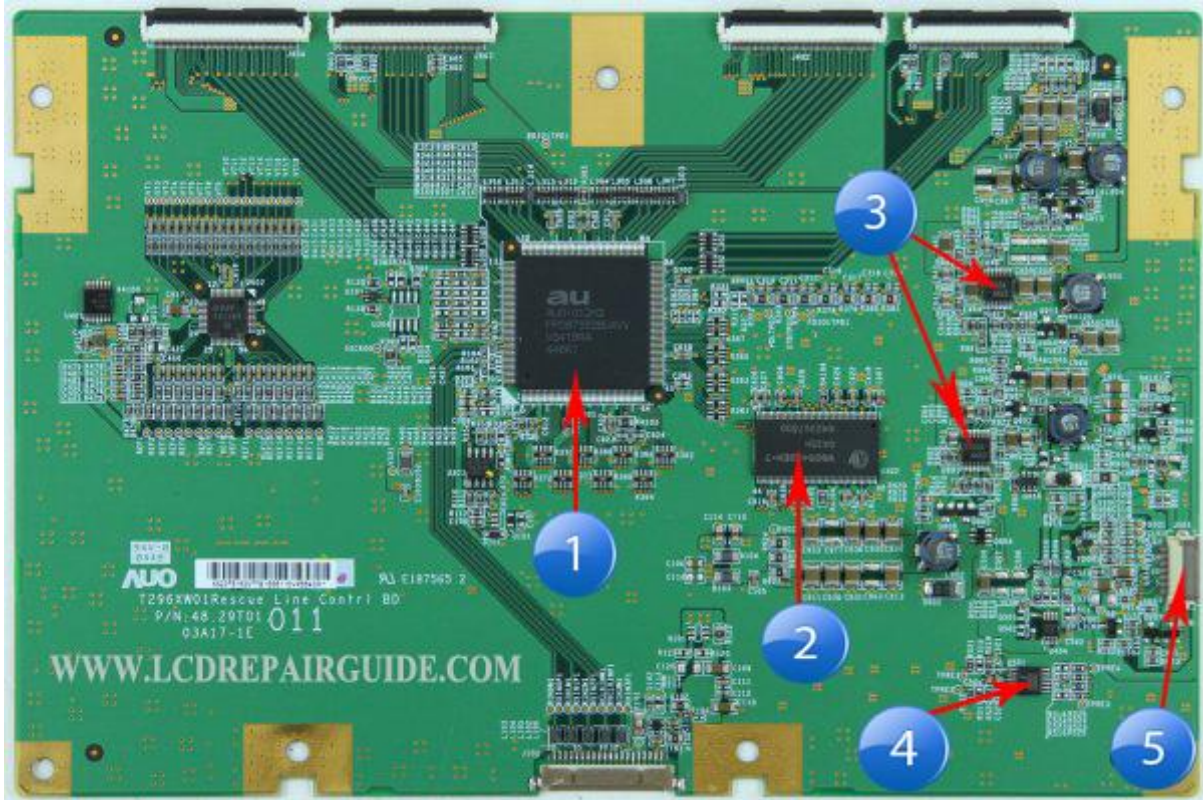
4) U302 SDRAM memory IC. If this IC failure, it will cause the TV No Display, White Screen or Display Distortion problem.

5) U901 & U911 power management IC. If this IC failure, it will cause the TV No Display.

3) **T-con Board:** T296XW01-011

LCD Panel Model: 30 inches Panel

Note: Vcc input= 12V



1) U301= FPD87352B IC. If this IC failure, it will cause the TV No Display.

2) U302= W986432EH SDRAM. If this IC failure, it will cause the TV No Display.

3) U901 & U911= 9743A power management IC (DC-DC circuit IC). If this IC failure, it will cause the TV No Display.

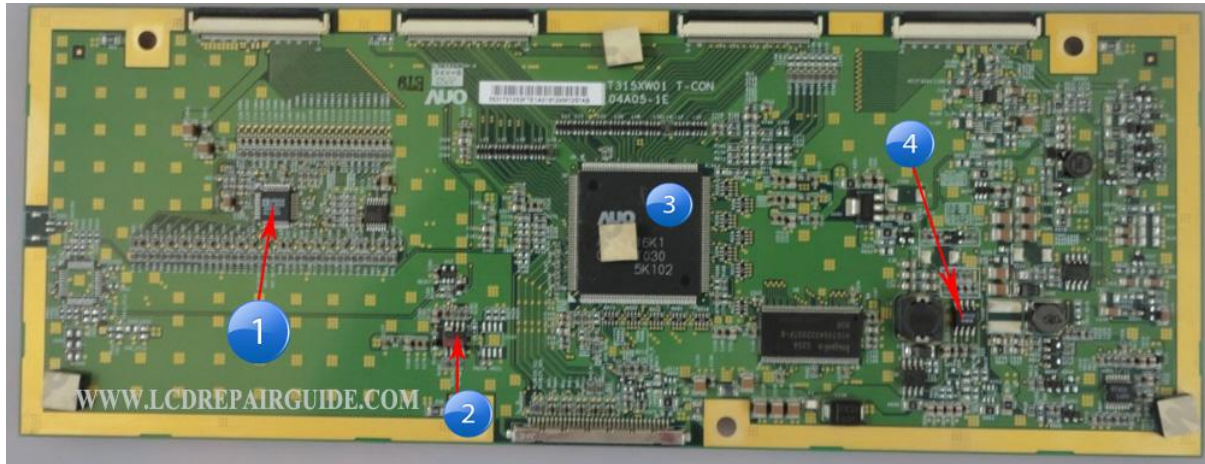
4) U501= EL5420. If this IC failure, it will cause the TV No Display.

5) J501= FPC cable connector. If this connector contact pins abnormal, it will cause the TV No Display, Flickering or sometime No Display problem.

4) **T-con Board:** T315XW01

LCD Panel Model: 32 inches Panel, 37 inches Panels

Note: Vcc input= 12V



1) U3= ADD8709. If this IC failure, it will cause the TV No Display.

2) U11= EEPROM memory IC. If this IC failure, it will cause the TV No Display or White Screen problem.

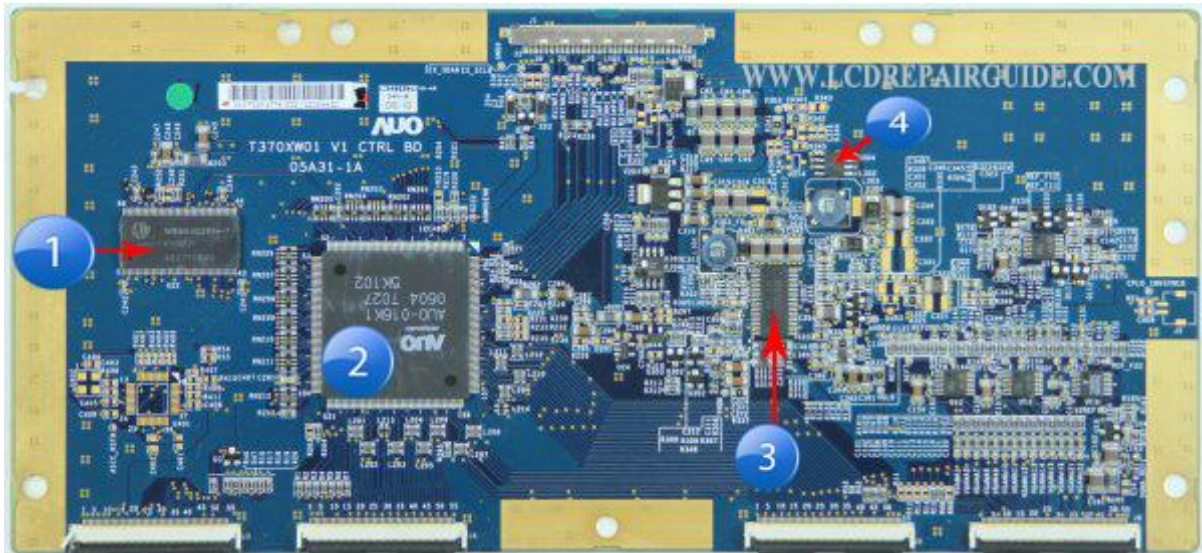
3) U9= AUO-016K1. If this IC failure, it will cause the TV No Display or Full Screen of Vertical Lines/Bars.

4) U2= AAT1110 power management IC (DC-DC circuit IC). If this IC failure, it will cause the TV No Display.

5) **T-con Board:** T370XW01

LCD Panel Model: 37 inches Panel

Note: Vcc input= 12V



- 1) U22= SDRAM memory IC. If this IC failure, it will cause the TV No Display or White Screen problem.
- 2) U21= AUO-016K1. If this IC failure, it will cause the TV No Display or Abnormal Display problem.
- 3) U301= BD8156EFV. If this IC failure, it will cause the TV No Display.
- 4) Q304= RSS085. If this component failure, it will cause the TV No Display.

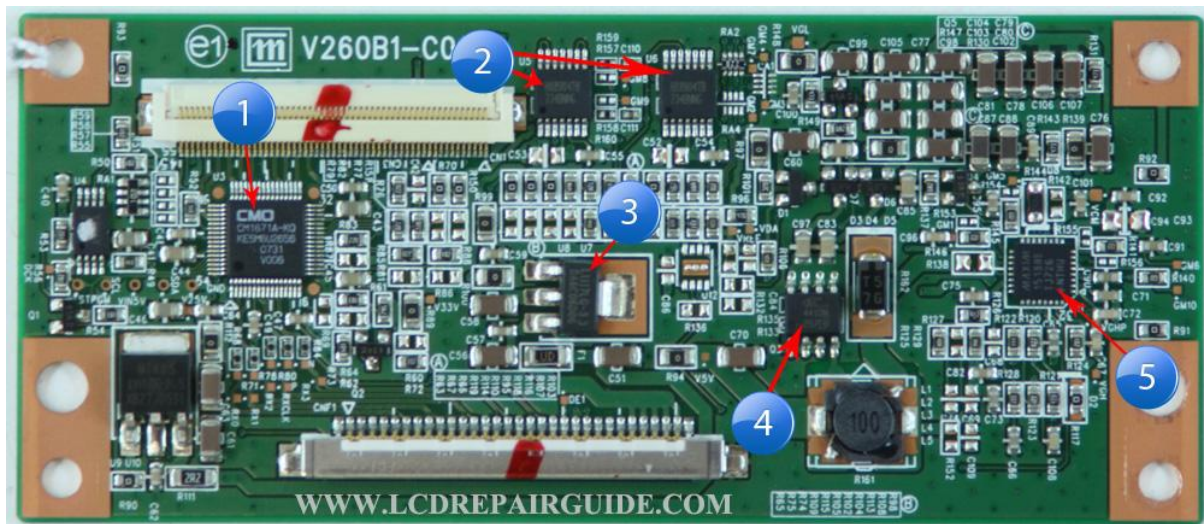
ChiMei Innolux (CM, CMO, CMI)

Chi Mei Corporation is part of a privately held holding company called the Chi Mei Group, which has numerous subsidiaries. One of them is **Chi Mei Optoelectronics (CMO)**, which was founded in 1997 as a subsidiary of Chi Mei Corporation. Chi Mei Group was the largest shareholder in publicly listed CMO. The new **Chimei Innolux Corporation (CMI)** is the world's No. 2 and Taiwan's No. 1 largest maker of TFT-LCD panels.

1) **T-con Board:** V260B1-C01

LCD Panel Model: 26 inches Panel

Note: Vcc input= 5V



1) U3= CM1671. If this IC abnormal, the TV will No Display.

2) U5= HX8904 is a quad operational amplifiers and it is used to buffer reference voltages for GAMMA Correction in a T-con board.

3) U8 is a LDO IC. If this IC abnormal, the TV will No Display.

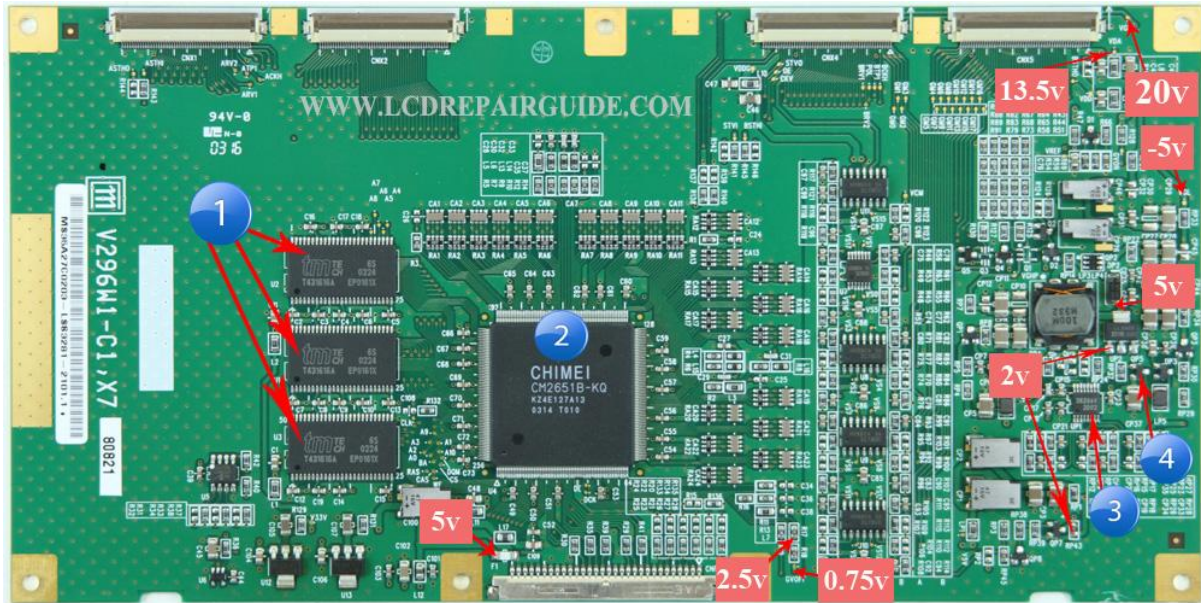
4) Q3= P2003BVG (MOSFET). If this component abnormal it will cause the TV No Display problem.

5) U11= MAX1518BE. This is a power management IC or calls it as DC-DC circuit IC. If this IC failure it will cause the TV No Display.

2) T-con Board: V296W1-C1 X7

LCD Panel Model: 30 Inches Panel

Note: Vcc input= 5V



1) U1, U2, U3= SDRAM (Synchronous DRAM). If this IC failure, it will cause the TV No Display.

2) U4= CM2561B-KQ. If this IC failure, it will cause the TV No Display.

3) UP1= FA3269AV DC-DC IC. If this IC failure, it will cause the TV No Display.

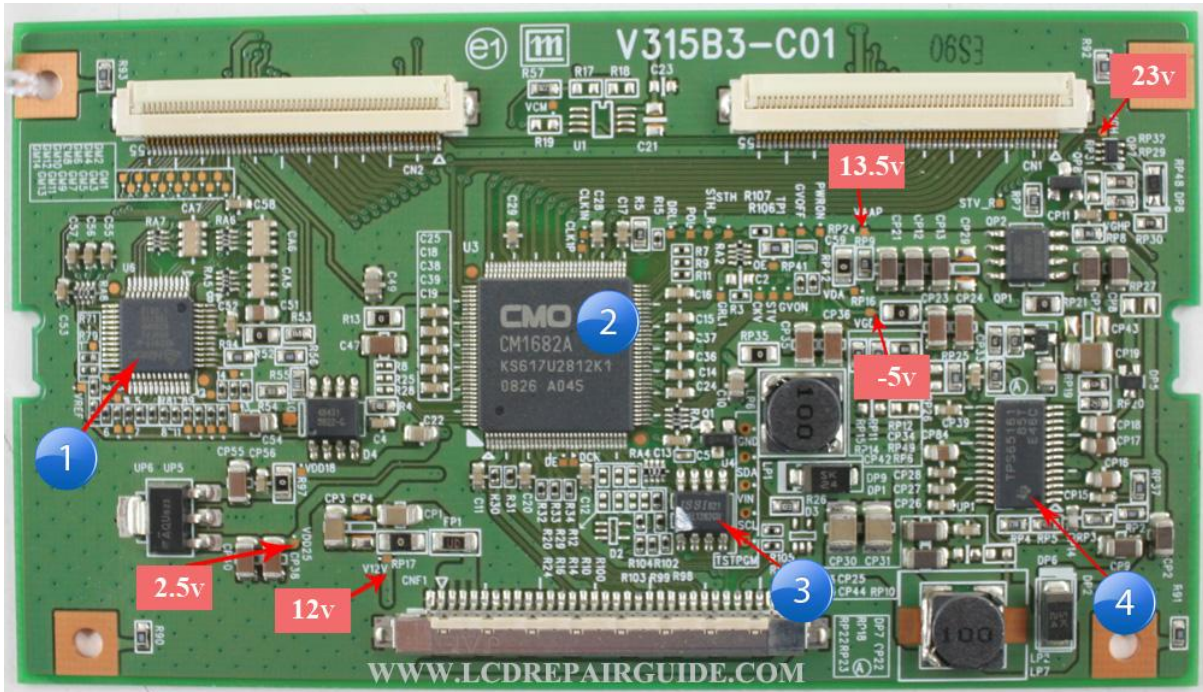
4) QP5= 2301 (MOSFET). If this component failure, it will cause the TV No Display.

* Gamma Correction circuit using these IC U7- U11 (HX8904TA or HX8904SA).

3) T-con Board: V315B3-C01

LCD Panel Model: 32 inches Panel

Note: Vcc input= 12V

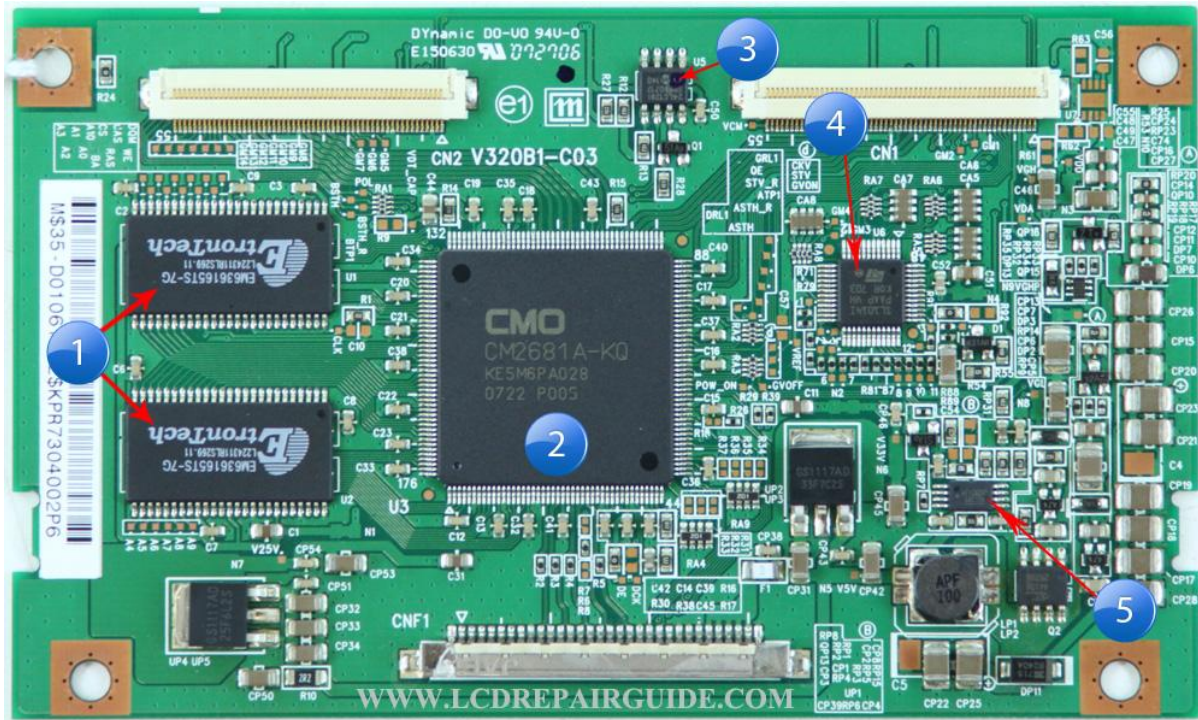


- 1) U6= HX8915-A Gamma IC. If this IC failure, it will cause the TV No Display.
- 2) U3= CM1682A. If this IC failure, it will cause the TV No Display.
- 3) U4= 24LC128 EEPROM memory IC. If this IC failure, it will cause the TV No Display or White Screen.
- 4) UP1= TPS65161 Power management IC or DC-DC IC. If this IC failure, it will cause the TV No Display.

4) T-con Board: V320B1-C03

LCD Panel Model: 32 Inches Panel

Note: Vcc input= 12V

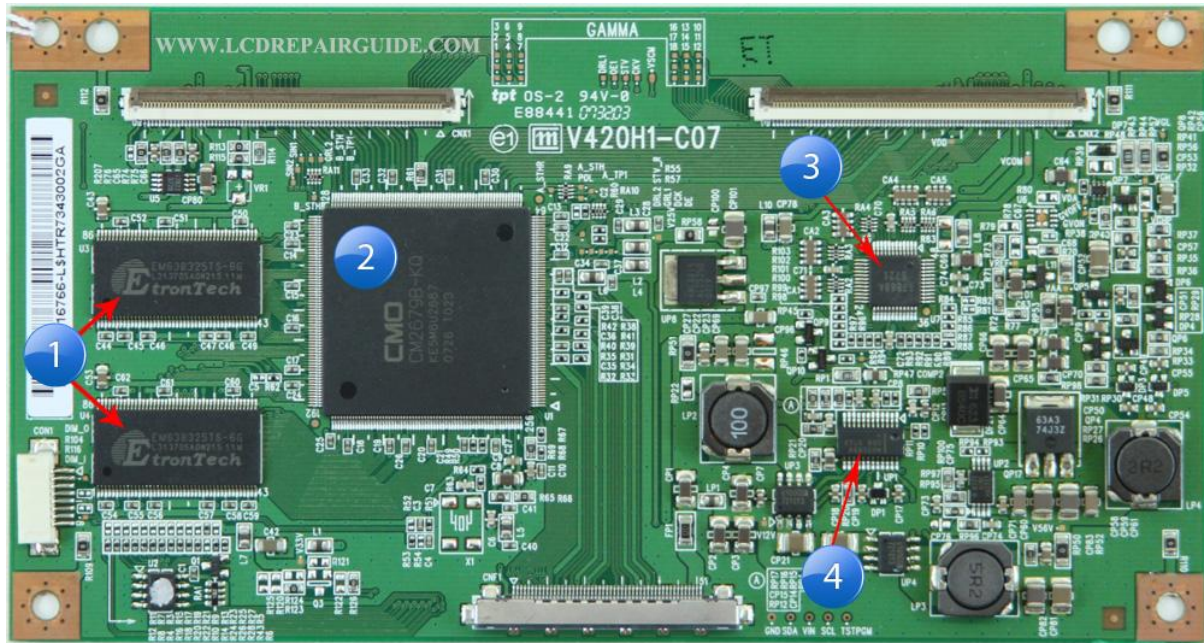


- 1) U1, U2= SDRAM. If one of these IC failure, it will cause the TV No Display.
- 2) U3= CM2681A-KQ. If this IC failure, it will cause the TV No Display.
- 3) U5= EEPROM memory IC. If this IC failure, it will cause the TV No Display or White Screen problem.
- 4) U6= SL1014I Gamma IC. If this IC failure, it will cause the TV No Display.
- 5) FP5138 DC-DC IC. If this IC failure, it will cause the TV No Display.

5) T-con Board: V420H1-C07

LCD Panel Model: 47 Inches Panel

Note: Vcc input= 12V



1) U3, U4= SDRAM memory IC. If this IC failure, it will cause the TV No Display or Display Distortion.

2) U16= CM2679B-KQ. If this IC failure, it will cause the TV No Display, Display Distortion or Abnormal Display.

3) U7= i7868A Gamma IC. If this IC failure, it will cause the TV No Display.

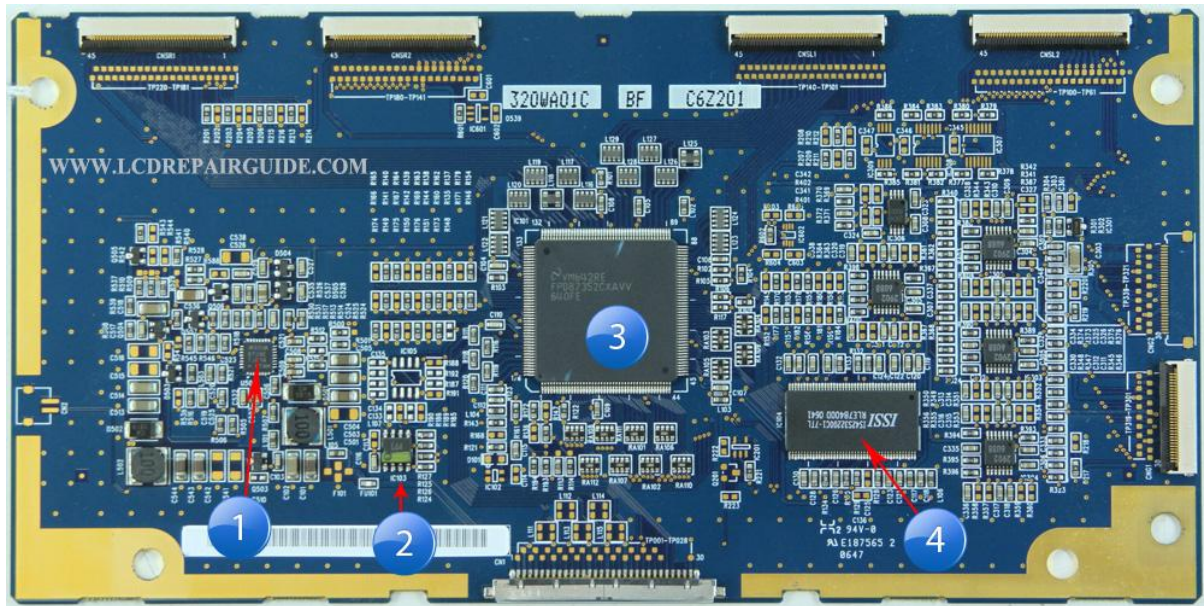
4) UP1= TPS65161 power management IC (DC-DC circuit IC). If this IC failure, it will cause the TV No Display.

CPT (Chunghwa Picture Tubes Ltd)

1) **T-con Board:** CPT320WA01C

LCD Panel Model: 32 inches Panel

Note: Vcc input= 12V



1) U501= MAXIM8728E power management IC. If this IC failure, it will cause the TV No Display.

2) IC103 EEPROM memory IC. If this IC failure, it will cause the TV No Display or White Screen problem.

3) IC101= FPD87352CXA. If this IC failure, it will cause the TV No Display.

4) IC104= SDRAM memory IC. If this IC failure, it will cause the TV No Display or Display Distortion problem.

HITACHI

1) **T-con Board:** 19-100056

LCD Panel Model: 37 inches Panel

Note: Vcc input= 12V



1) IC6= BD8161 power management IC. If this IC failure, it will cause the TV No Display.

2) IC2= TCON102A-F. If this IC failure, it will cause the TV No Display, Watermark Display or Rainbow Screen problem.

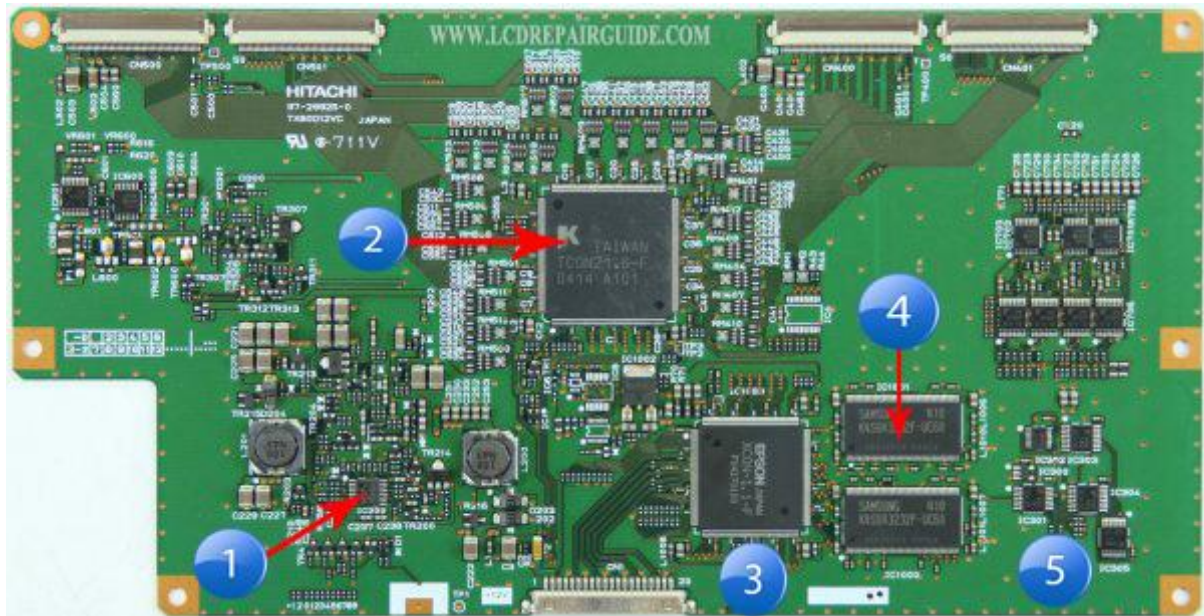
3) IC4 EEPROM IC. If this IC failure, it will cause the TV No Display or White Screen problem.

4) IC5= BUF12800 Gamma Correction Amplifiers IC. If this IC failure, it will cause the TV No Display.

2) **T-con Board:** 97-29925-0

LCD Panel Model: 32 inches Panel

Note: Vcc input= 12V



1) IC200= 8018SA power management IC. If this IC failure, it will cause the TV No Display.

2) IC1002= TCON21.6-F. If this IC failure, it will cause the TV No Display.

3) IC1003= XCON-1. If this IC failure, it will cause the TV No Display.

4) IC1000 & IC1001= SDRAM memory IC. If this IC failure, it will cause the TV No Display.

5) IN74VHC74D IC. If this IC failure, it will cause the TV No Display.

3) T-con Board: 97-390310

LCD Panel Model: 32 inches Panel

Note: Vcc input= 12V



- 1) IC1= AN8049 IC. If this IC failure, it will cause the TV No Display.
- 2) 74LCX00 - If this IC failure, it will cause the TV No Display.
- 3) IC2= TCON23.1A. If this IC failure, it will cause the TV No Display.
- 4) IC3= W9864G2EH SDRAM memory IC. If this IC failure, it will cause the TV No Display.
- 5) IC9000= 5325IRZ. If this IC failure, it will cause the TV No Display.

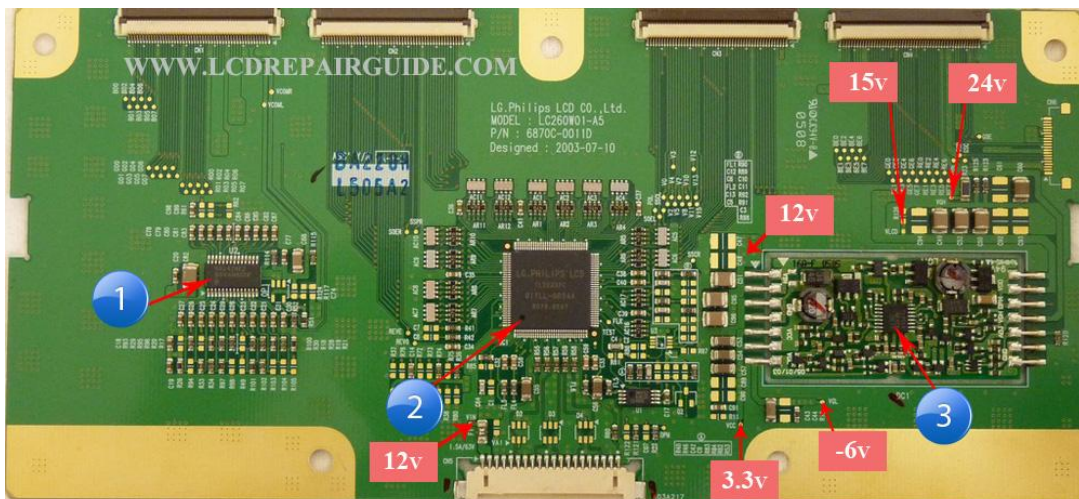
LG (LG Philips LCD, LG Display Co.)

LG Display Co. was originally formed as a joint venture by the Korean electronics company LG Electronics and the Dutch company Koninklijke Philips Electronics in 1999 to manufacture active matrix liquid crystal displays (LCDs) and was formerly known as **LG Philips LCD**, but Philips sold off all its shares in late 2008.

1) **T-con Board:** LC260W01-A5 (6870C-0011D)

LCD Panel Model: 26 inches Panel

Note: Vcc input= 12V



1) U2= EL53241REZ. If this IC failure, it will cause the TV No Display or Display Abnormal Color problem.

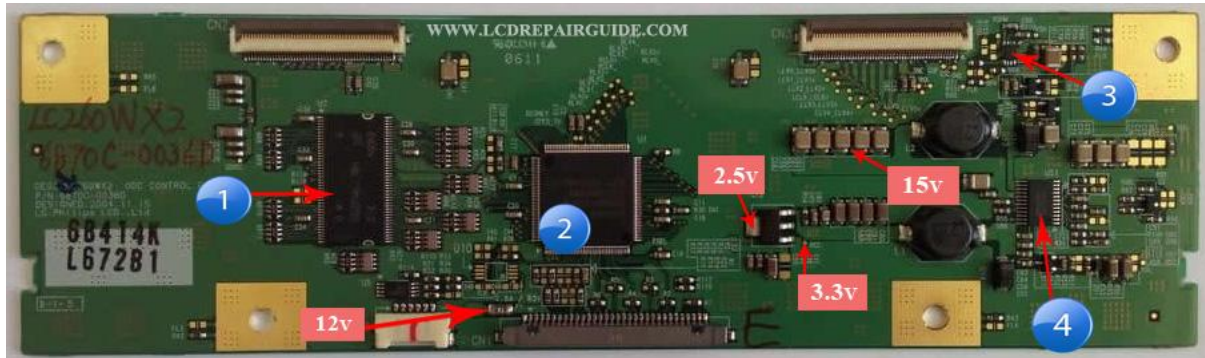
2) UC1= TL2223PC. If this IC failure, it will cause the TV No Display, Full Screen of Vertical Lines/Bars or Display Distortion problem.

3) This is a DC-DC circuit PCB Board. If this small PCB malfunction, it will cause the TV No Display.

2) **T-con Board:** LC260WX2 (6870C-0036D)

LCD Panel Model: 26 inches Panel

Note: Vcc input= 12V



- 1) U7 is a SDRAM memory IC. If this IC failure, it will cause the TV No Display or Display Distortion problem.
- 2) U1= R8A00011FT. If this IC failure, it will cause the TV No Display or Rainbow Display on the Screen.
- 3) U2= LPL1544. If this IC failure, it will cause the TV No Display.
- 4) US1= LM2716MT power management IC. If this IC failure, it will cause the TV No Display.

3) **T-con Board:** LC260WX2-SLB3 (6870C-0079C)

LCD Panel Model: 26 inches Panel

Note: Vcc input= 12V

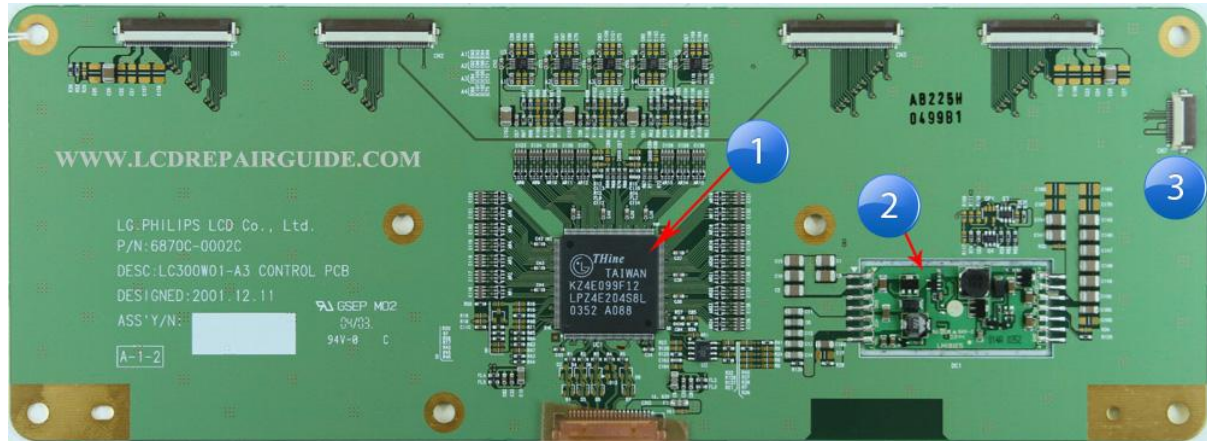


- 1) U10= EPM3064A. If this IC failure, it will cause the TV No Display.
- 2) U6 is a SDRAM memory IC. If this IC failure, it will cause the TV No Display or Display Distortion problem.
- 3) UC1= TL22710D. If this IC failure, it will cause the TV No Display, Display Distortion or Rainbow Display on the Screen problem.
- 4) U9= TPS65160 power management IC (DC-DC circuit IC). If this IC failure, it will cause the TV No Display.

4) **T-con Board:** LC300W01-A3 (6870C-0002C)

LCD Panel Model: 30 inches Panel

Note: Vcc input= 12V



1) UC1= KZ4E099E12. If this IC failure, it will cause the TV No Display or White Screen problem.

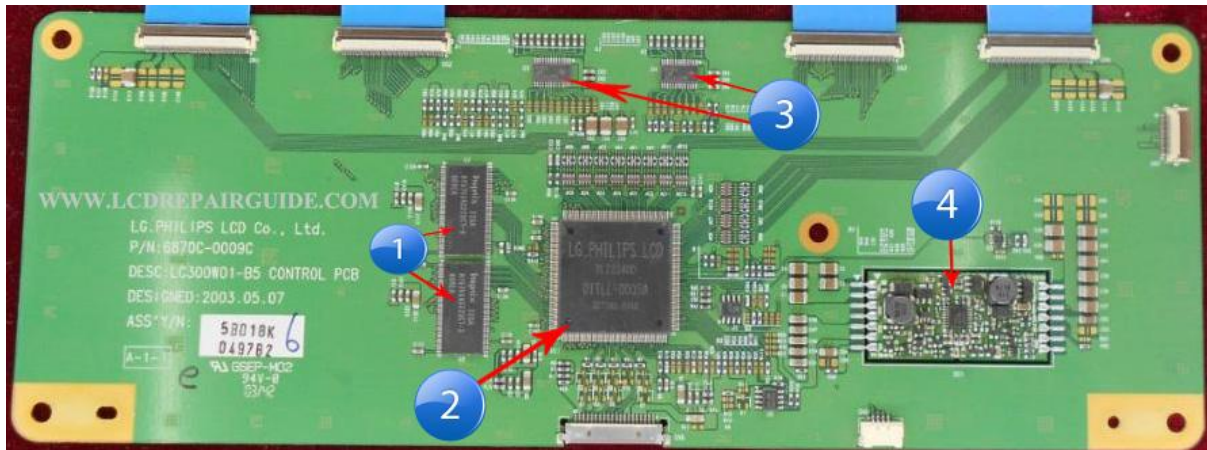
2) This is a DC-DC circuit PCB board. If this PCB board malfunctions it will cause the TV No Display.

3) CN7 is a cable connector. If this connector or the cable contact not properly inserted or the connector solder pins dry joints, it will causing the display flickering or sometime No Display.

5) **T-con Board:** LC300W01-B5 (6870C-0009C)

LCD Panel Model: 30 inches Panel

Note: Vcc input= 12V

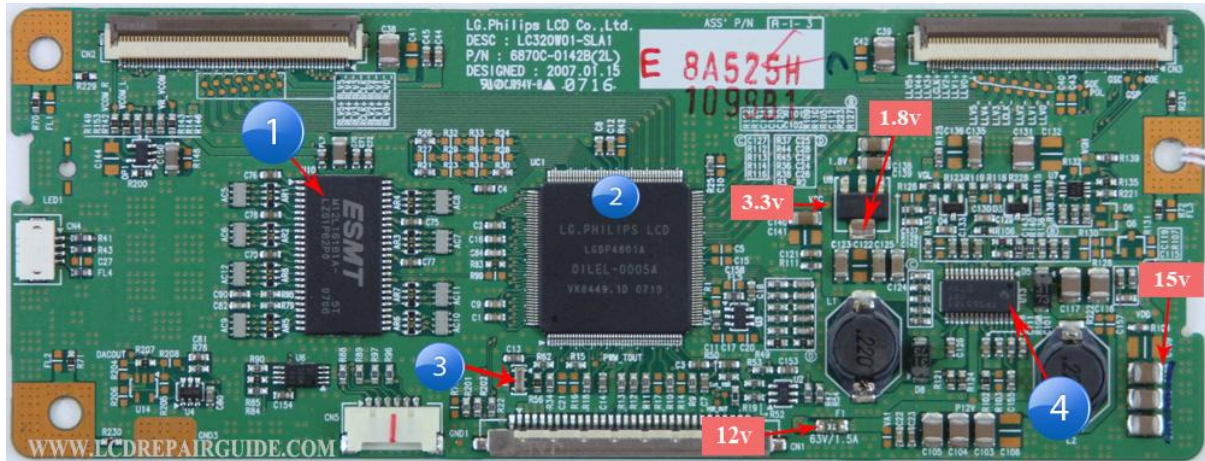


1) U8 is a SDRAM memory IC. If this IC failure, it will cause the TV No Display or Display Distortion.

2) UC1= TL22240D. If this IC failure, it will cause the TV No Display, Display Distortion or Display Color Abnormal problem.

3) U3 & U4= BUF11702. If this IC failure, it will cause the TV No Display.

4) This is a DC-DC PCB board. If this small PCB board malfunction and causing no voltage output, it will cause the TV No Display problem.

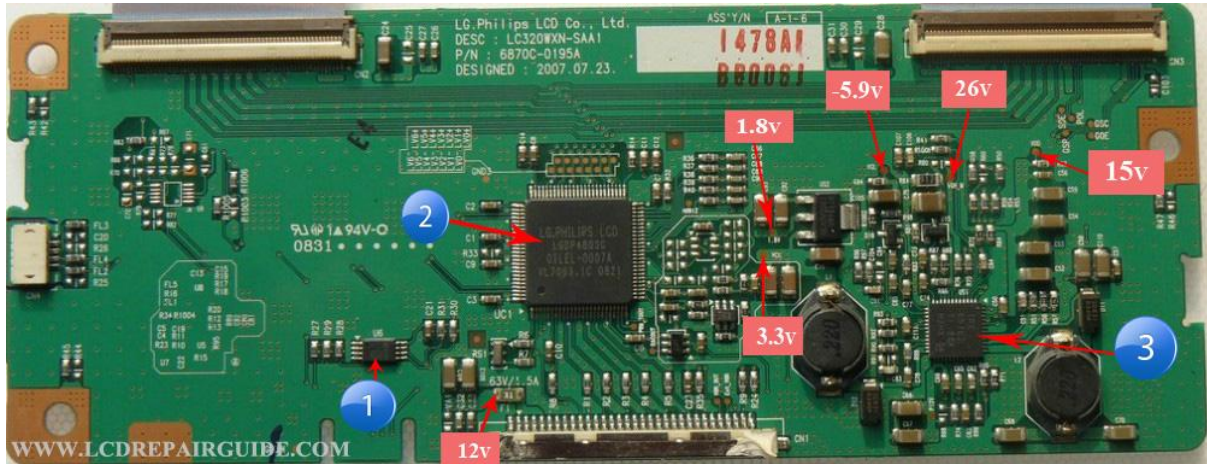
6) T-con Board: LC320W01-SLA1 (6870C-0142B)**LCD Panel Model:** 32 inches Panel**Note:** Vcc input= 12V

- 1) U10 is a SDRAM memory IC. If this IC failure, it will cause the TV No Display or White Screen problem.
- 2) UC1= LGDP4801A. If this IC failure, it will cause the TV No Display or Display Distortion problem.
- 3) RS1 is a Crystal. If this component failure, it will cause the TV No Display.
- 4) U13= TPS65161 is a power management IC. If this IC failure, it will cause the TV No Display.

8) **T-con Board:** LC320WXN-SAA1 (6870C-0195A)

LCD Panel Model: 32 inches Panel

Note: Vcc input= 12V



1) U6: If this IC failure, it will cause the TV No Display.

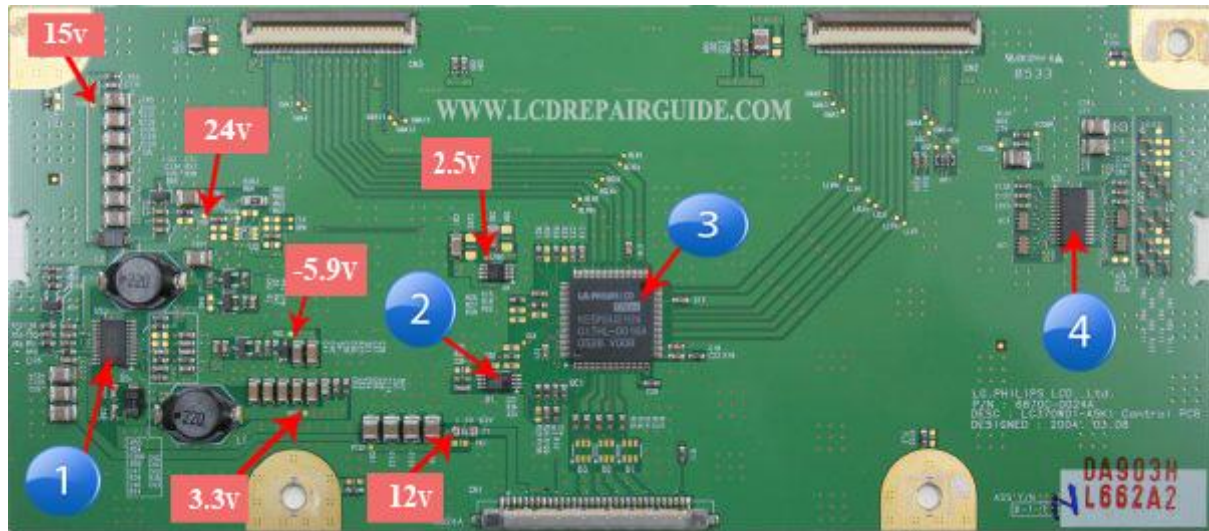
2) UC1= LGDP4803C. If this IC failure, it will cause the TV No Display or Display Distortion problem.

3) US1= TPS65162 is a power management IC. If this IC failure, it will cause the TV No Display.

9) **T-con Board:** LC370W01-A5K1 (6870C-0024A)

LCD Panel Model: 37 inches Panel

Note: Vcc input= 12V



1) US1= TPS65161 is a power management IC. If this IC failure, it will cause the TV No Display.

2) U1: This IC is a common fault for this T-con. When it is failure it will cause the TV No Display.

3) UC1=KE5M3U2109. If this IC failure, it will cause the TV No Display or White Screen problem.

4) U3= BUF11702. If this IC failure, it will cause the TV No Display or Abnormal Display Color problem.

10) T-con Board: LC370WX1 / LC320W01 (6870C-0060F)

LCD Panel Model: 37 inches Panel

Note: Vcc input= 12V

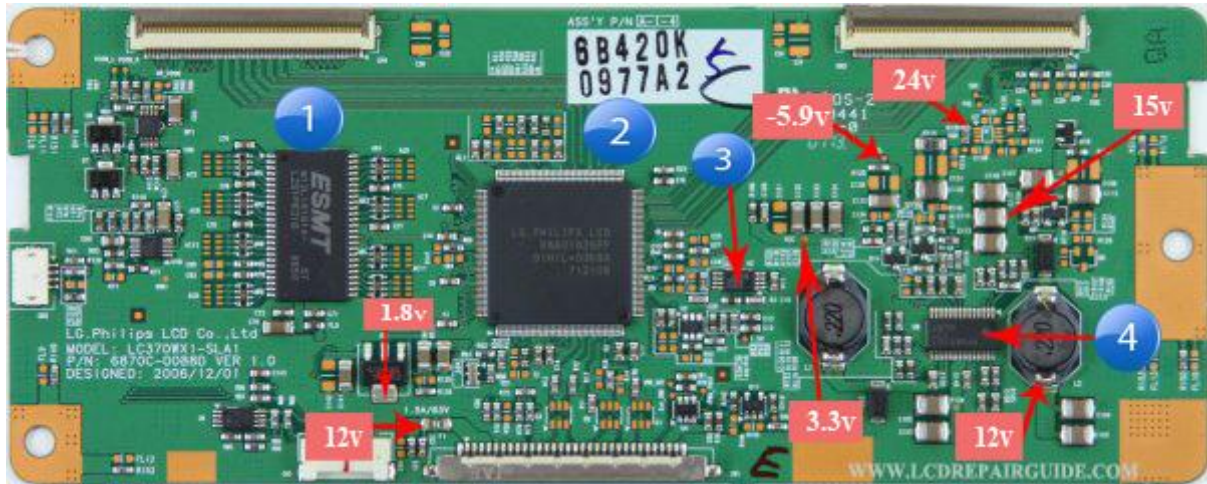


1) U6 is a SDRAM memory IC. If this IC failure, it will cause the TV No Display or Display Distortion problem.

2) U3 is an EEPROM IC. If this IC failure, it will cause the TV No Display or White Screen problem.

3) UC1= TL22710D. If this IC failure, it will cause the TV No Display, White Screen or Rainbow Display on the Screen.

4) U4= TPS65160 is a power management IC. If this IC failure, it will cause the TV No Display.

11) T-con Board: LC370WX1-SLA1 (6870C-0088D)**LCD Panel Model:** 37 inches Panel**Note:** Vcc input= 12V

1) U5 is a SDRAM memory IC. If this IC failure, it will cause the TV No Display or Display Distortion Problem.

2) UL1= R8A01028FP. If this IC failure, it will cause the TV No Display.

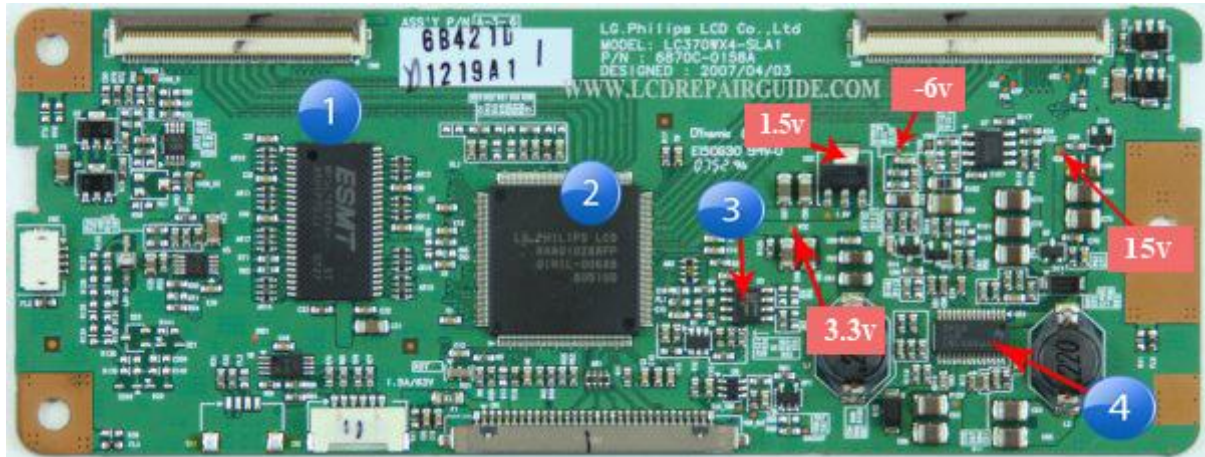
3) U3: If this IC failure, it will cause the TV No Display.

4) U9= TPS65161 power management IC (DC-DC circuit IC). If this IC failure, it will cause the TV No Display.

12) T-con Board: LC370WX4-SLA1 (6870C-0158A)

LCD Panel Model: 37 inches Panel

Note: Vcc input= 12V



1) U11 is a SDRAM memory IC. If this IC failure, it will cause the TV No Display or Display Distortion problem.

2) UL1= R8A01028AFP. If this IC failure, it will cause the TV No Display or Display Distortion problem.

3) U3 is an EEPROM memory IC. If this IC failure, it will cause the TV No Display or White Screen problem.

4) US1= TPS65161 is a power management IC. If this IC failure, it will cause the TV No Display.

13) T-con Board: LC420W02-B6 (6870C-0046B)

LCD Panel Model: 42 inches Panel

Note: Vcc input= 12V



1) U6= LM2716HT is a power management IC. If this IC failure, it will cause the TV No Display.

2) U10 is a SDRAM memory IC. If this IC failure, it will cause the TV No Display or Display Distortion problem.

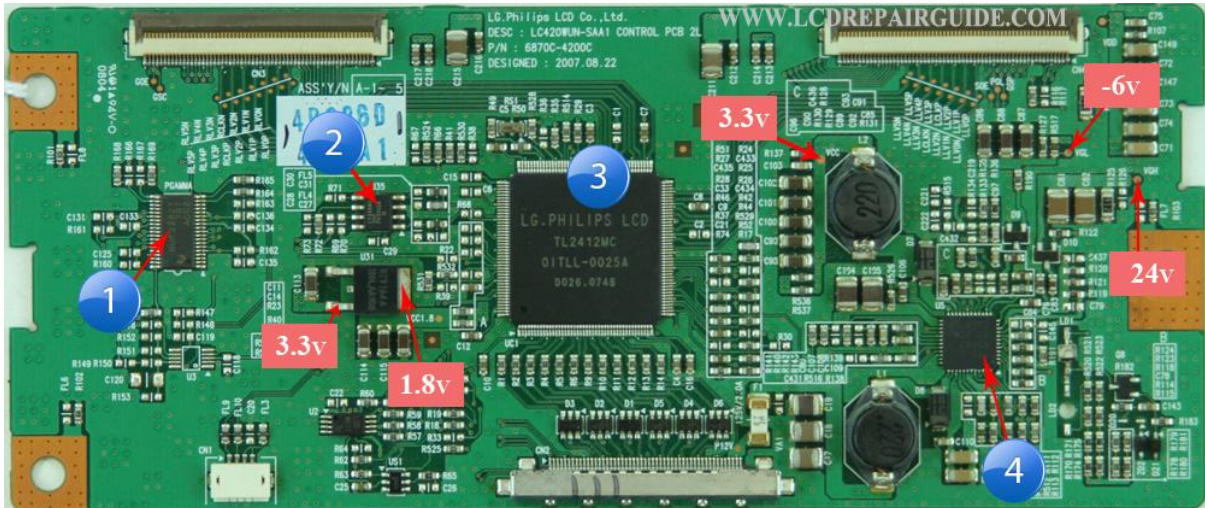
3) UC1= R8A00011FT. If this IC failure, it will cause the TV No Display, White Screen or Rainbow Display problem.

4) U9= EL5329IRZ. If this IC failure, it will cause the TV No Display or Abnormal Display Color on the screen.

14) T-con Board: LC420WUN-SAA1 (6870C-4200C)

LCD Panel Model: 42 inches HD Panel

Note: Vcc input= 12V



1) PGAMMA: BUF22821. If this IC failure, it will cause the TV No Display or Display Missing Colors.

2) U35= CY25560. If this IC failure, it will cause the TV No Display.

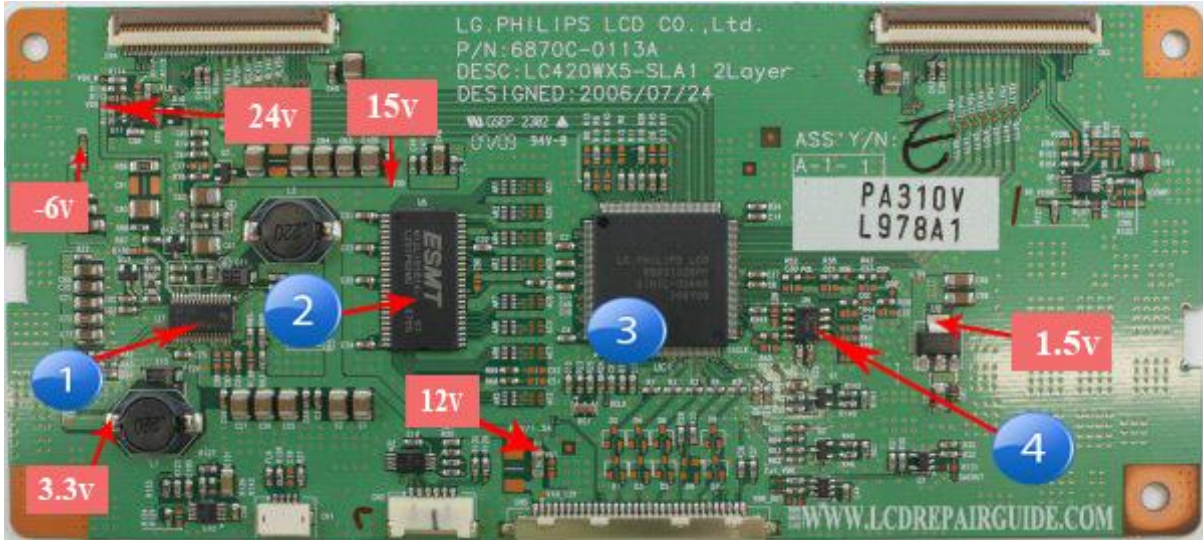
3) UC1= TL2412MC. If this IC failure, it will cause the TV No Display or Display Distortion problem.

4) U5= TPS65162 power management IC. If this IC failure, it will cause the TV No Display.

15) T-con Board: LC420WX5-SLA1 (6870C-0113A)

LCD Panel Model: 42 inches Panel

Note: Vcc input= 12V



1) U7= TPS65161 is a power management IC. If this IC failure, it will cause the TV No Display.

2) U5 is a SDRAM memory IC. If this IC failure, it will cause the TV No Display or Display Distortion problem.

3) UC1= R8A0102SFP. If this IC failure, it will cause the TV No Display or Rainbow Display problem.

4) U4 is an EEPROM IC. If this IC failure, it will cause the TV No Display or White Screen problem.

16) T-con Board: LC420WX7 (6870C-0150B)**LCD Panel Model:** 42 inches Panel**Note:** Vcc input=12V

1) U7= TPS65162 is a power management IC. If this IC failure, it will cause the TV No Display.

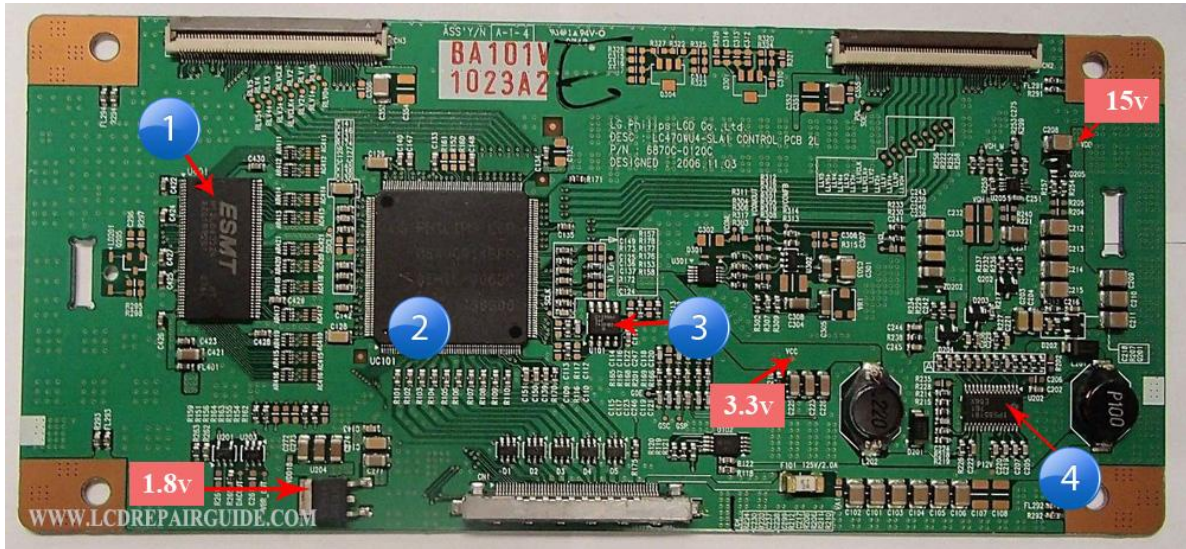
2) U5 is a SDRAM memory IC. If this IC failure, it will cause the TV No Display or White Screen problem.

3) UC1= R8A01028AFP. If this IC failure, it will cause the TV No Display, White Screen or Rainbow Display problem.

17) T-con Board: LC470WU4-SLA1 (6870C-0120C)

LCD Panel Model: 47 inches Panel

Note: Vcc input= 12V



1) U401 SDRAM. If this IC failure, it will cause the TV No Display or Display Distortion problem.

2) UC101= R8A00014BF. If this IC failure, it will cause the TV No Display or White Screen problem.

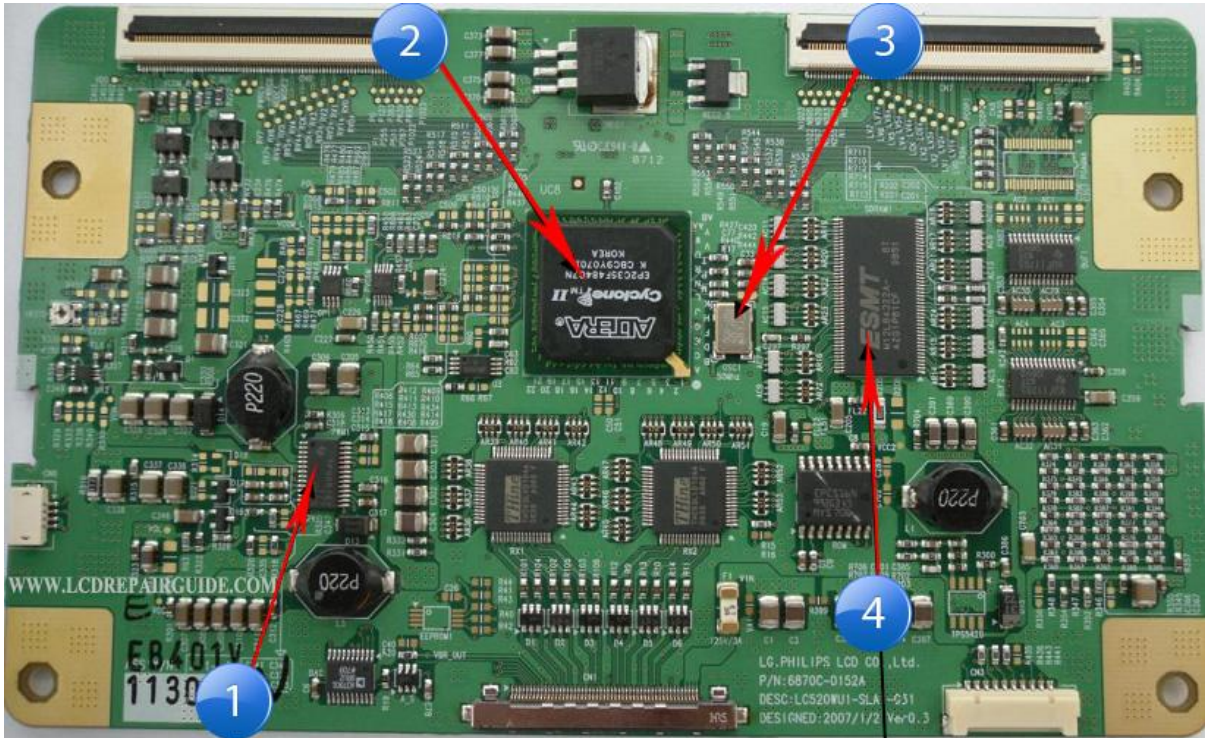
3) U101 EERPOM memory IC. If this IC failure, it will cause the TV No Display.

4) U202= TPS65161 power management IC. If this IC failure, it will cause the TV No Display.

18) T-con Board: LC520WU1-SLA1 (6870C-0152A)

LCD Panel Model: 52 inches Panel

Note: Vcc input= 12V



1) PWM1= TPS65161 power management IC (DC-DC circuit IC). If this IC failure, it will cause the TV No Display.

2) UC8= EP2C35F484C7N. If this IC failure, it will cause the TV No Display or Display Distortion problem.

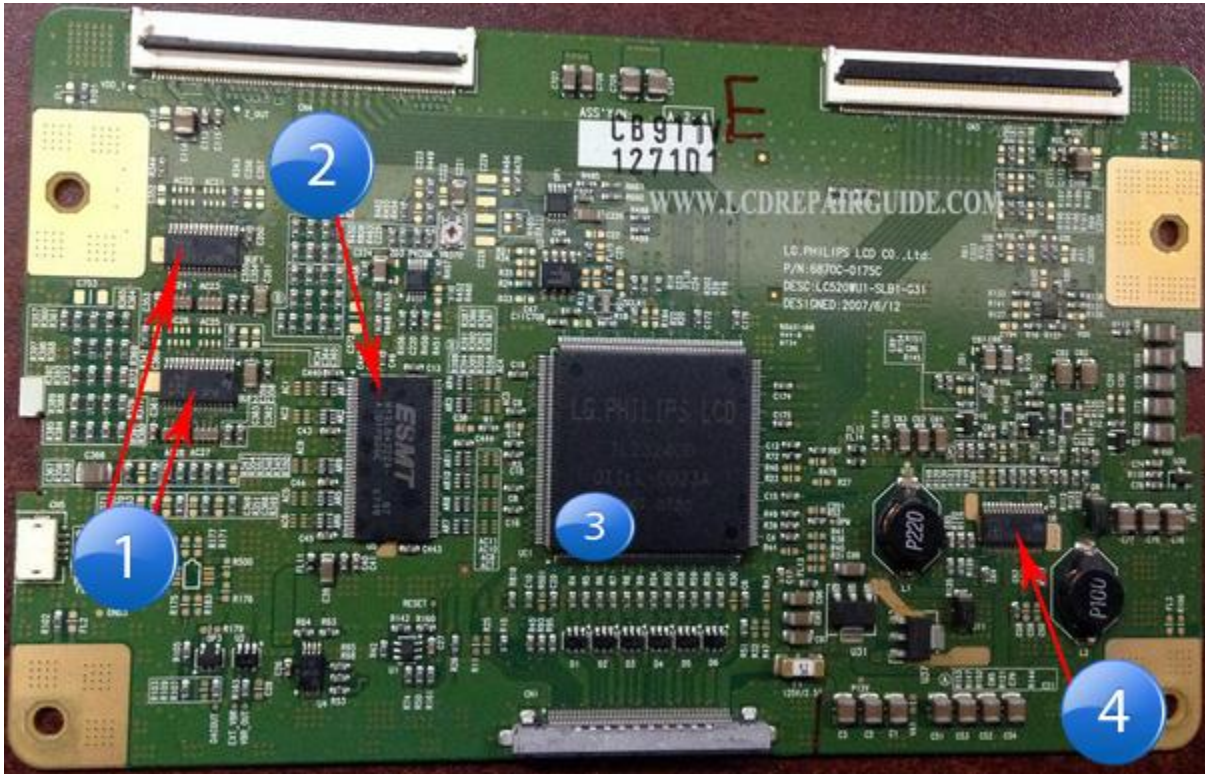
3) OSC1= 50MHz crystal. If this component failure, it will cause the TV No Display or Rainbow Display on the screen.

4) SDRAM1 is a SDRAM memory IC. If this IC failure, it will cause the TV No Display or Rainbow Display problem.

19) T-con Board: LC520WU1-SLB1-G31 (6870C-0175C)

LCD Panel Model: 52 inches Panel

Note: Vcc input= 12V



1) BUF1& BUF2= BUF11705. If this IC failure, it will cause the TV No Display.

2) U5 is a SDRAM memory IC. If this IC failure, it will cause the TV No Display, Display Distortion or Rainbow Display problem.

3) UC1= TL23240D. If this IC failure, it will cause the TV No Display, Display Distortion or Rainbow Display problem.

4) U6= TPS65161 power management IC. If this IC failure, it will cause the TV No Display.

S-LCD Corporation (SAMSUNG)

S-LCD Corporation is owned by Samsung Electronics. The company was established in April 2004 in Chungcheongnam-do, South Korea as a joint venture between Samsung Electronics Co. Ltd (50% plus one share) and Sony Corporation (50% minus one share).

S-LCD, as of April 25, 2008, operated with a monthly production capacity of 100,000 seventh-generation amorphous silicon (a-Si) panels and 50,000 eighth-generation panels based on PVA technology, which are integrated into both Samsung Electronics and Sony LCD televisions. S-LCD originally had production facilities in both Japan and South Korea. Due to rising costs and an increasing demand from the Latin American market, S-LCD opened production facilities in Baja California, Mexico, where both Samsung and Bravia have large LCD production facilities. On December 26, 2011, Samsung Electronics announced that it will acquire all of Sony's shares. On January 19, 2012, Sony sold to Samsung all of its shares of S-LCD.

1) **T-con Board:** 260W2C4LV1.0

LCD Panel Model: 26 inches Panel

Note: Vcc input= 5V



1) OP2 & OP3= EL5420CRE IC. If this IC failure, it will cause the TV No Display.

- 2) ICT8= EL7581IREZ power management IC. If this IC failure, it will cause the TV No Display.
- 3) ICT1= LRX4222T2. If this IC failure, it will cause the TV No Display or Full Screen of Vertical Lines/Bars.
- 4) ICD1 SDRAM memory IC. If this IC failure, it will cause the TV No Display or Display Distortion problem.

2) **T-con Board:** 260W2C4LV1.6

LCD Panel Model: 26 inches Panel

Note: Vcc input= 5V



- 1) D3 & D8 both are Diodes. If one of this component failure, it will cause the TV No Display.
- 2) IC320= 7585A is a power management IC. If this IC failure, it will cause the TV No Display.
- 3) ICT1= LRX4222T2. If this IC failure, it will cause the TV No Display, Display Distortion or Full Screen of Vertical Lines/Bars.
- 4) ICD1= K4D263238F-UC50 SDRAM memory IC. If this IC failure, it will cause the TV No Display or Display Distortion problem.

3) T-con Board: 320W2C4LV1.4

LCD Panel Model: 32 inches Panel

Note: Vcc input= 5V



1) OP1 & OP2= EL5420CRZ. If one of this IC failure, it will cause the TV No Display.

2) ICT4= LRX4222T2. If this IC failure, it will cause the TV No Display, Display Distortion or Missing Color on the Screen.

3) ICS1= K4D26238F-UC50 SDRAM memory IC. If this IC failure, it will cause the TV No Display or Display Distortion problem.

4) ICP7= LM2700 power management IC. If this IC failure, it will cause the TV No Display.

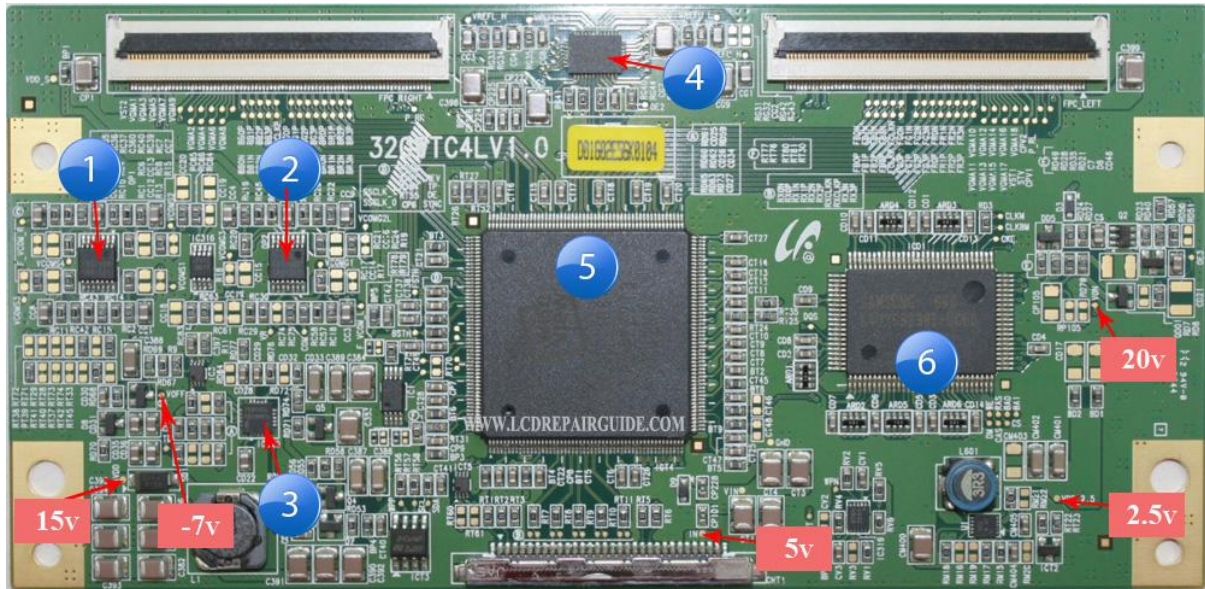
4) T-con Board: 320W2C4LV6.4**LCD Panel Model:** 32 inches Panel**Note:** Vcc input= 5V

- 1) ICT3 EEPROM memory IC. If this IC failure, it will cause the TV No Display or White Screen problem.
- 2) ICT4= LRX4222T3. If this IC failure, it will cause the TV No Display, Display Distortion or Abnormal Display problem.
- 3) ICD1 SDRAM memory IC. If this IC failure, it will cause the TV No Display or Full Screen of Vertical Lines/Bars.
- 4) IC320= EL7585AIL power management IC. If this IC failure, it will cause the TV No Display.

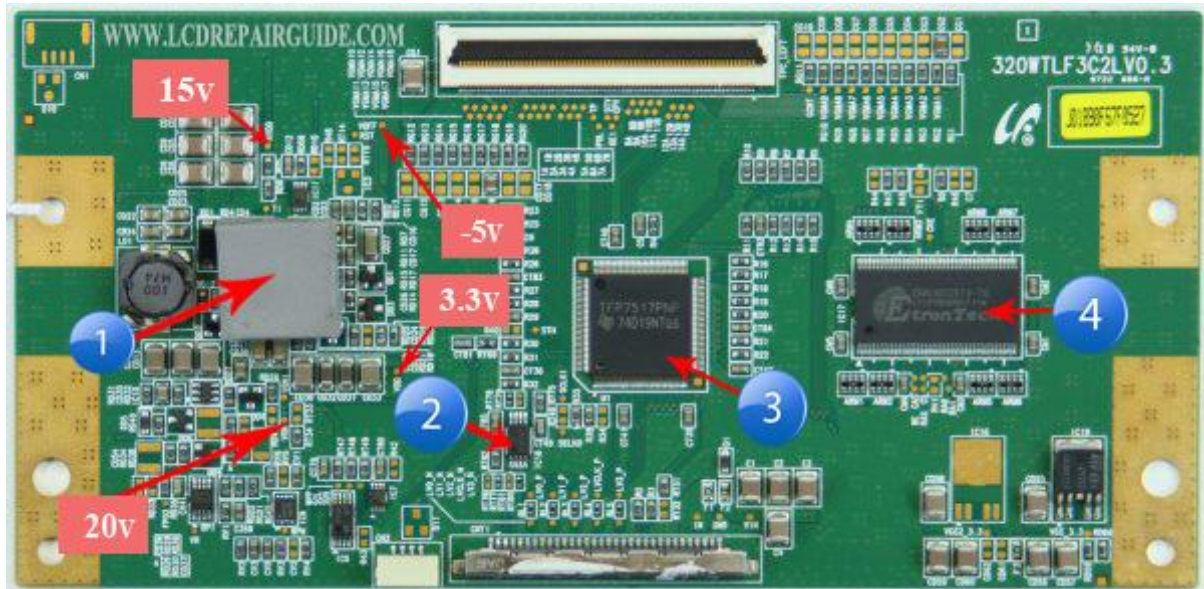
5) **T-con Board:** 320WTC4LV1.0

LCD Panel Model: 32 inches Panel

Note: Vcc input= 5V



- 1) OP2= 17514HS. If this IC failure, it will cause the TV half “LEFT” side No Display.
- 2) OP1= 17514HS. If this IC failure, it will cause the TV half “RIGHT” side No Display.
- 3) IC4= 7585AIL power management IC. If this IC failure, it will cause the TV No Display.
- 4) IC14= 24006IRZ. If this IC failure, it will cause the TV No Display or Full Screen of Vertical Lines/Bars.
- 5) IC1= LRX4222T2. If this IC failure, it will cause the TV No Display or Color Stripe on the screen.
- 6) SDRAM memory IC. If this IC failure, it will cause the TV No Display or Display Distortion problem.

6) T-con Board: 320WTLF3C2LV0.3**LCD Panel Model:** 32 inches Panel**Note:** Vcc input= 5V

1) IC12= 7585A power management IC. If this IC failure, it will cause the TV No Display.

2) IC18= EEPROM memory IC. If this IC failure, it will cause the TV No Display or White Screen problem.

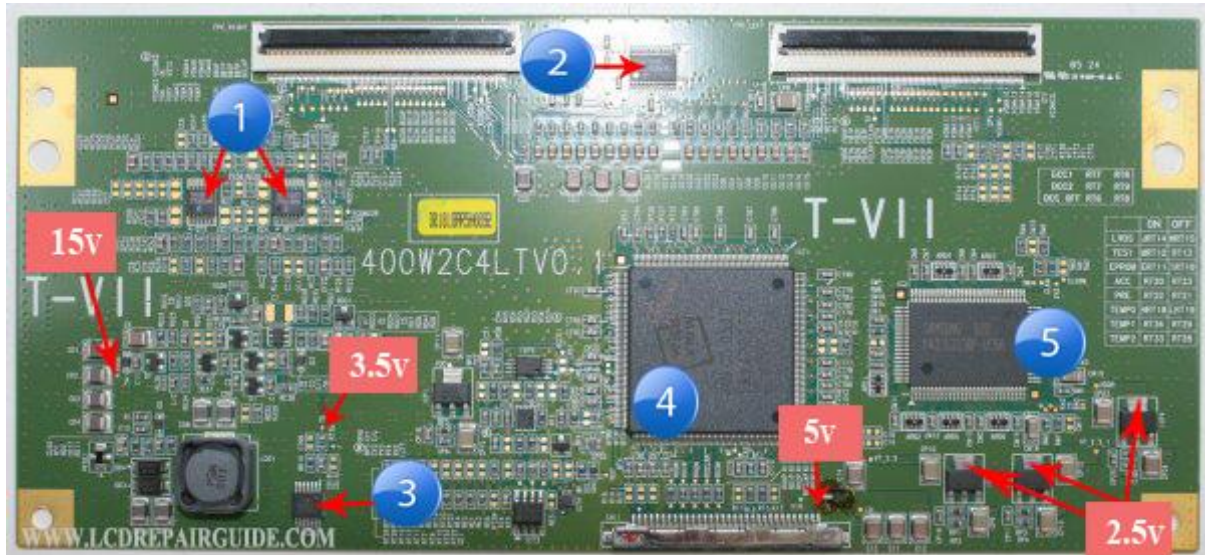
3) U1= TFP7517PNP. If this IC failure, it will cause the TV No Display or Display Abnormal problem.

4) U1= EM68325TS-7G SDRAM memory IC. If this IC failure, it will cause the TV No Display or Display Distortion problem.

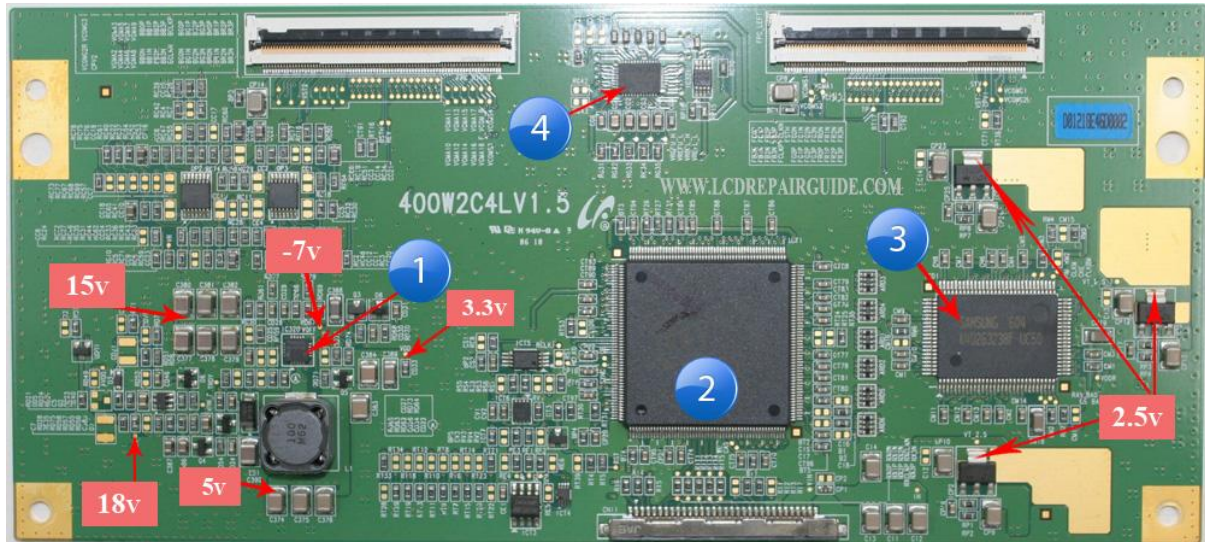
7) **T-con Board:** 400W2C4LTV0.1

LCD Panel Model: 40 inches Panel

Note: Vcc input= 5V



- 1) OP3 = 54200CRZ & another one if this IC failure, one of the half (left or right side) display will No Display or Display Abnormal.
- 2) ICG1= 5327CRZ. If this IC failure, it will cause the TV No Display.
- 3) ICD3= 2700NT power management IC. If this IC failure, it will cause the TV No Display.
- 4) ICt1= LRX4222 IC. If this IC failure, it will cause the TV No Display or Display Distortion problem.
- 5) ICD1 is a SDRAM memory IC. If this IC failure, it will cause the TV No Display or Display Distortion problem.

8) T-con Board: 400W2C4LV1.5**LCD Panel Model:** 40 inches Panel**Note:** Vcc input= 5V

1) IC320= EL7585AIL power management IC. If this IC failure, it will cause the TV No Display.

2) ICT1= LRX4222T3. If this IC failure, it will cause the TV No Display or Full Screen of Vertical Lines/Bars.

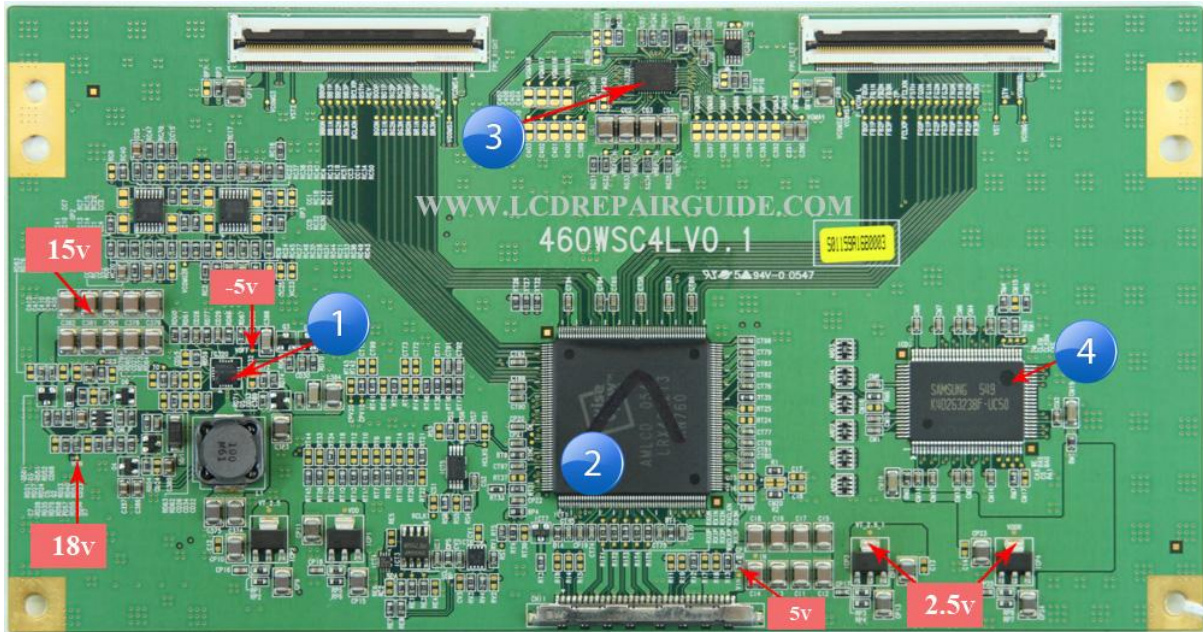
3) ICD1 is a SDRAM memory IC. If this IC failure, it will cause the TV No Display or Display Distortion problem.

4) IC322= 24006IRZ. If this IC failure, it will cause the TV No Display.

9) **T-con Board:** 460WSC4LV0.1

LCD Panel Model: 46 inches Panel

Note: Vcc input= 5V

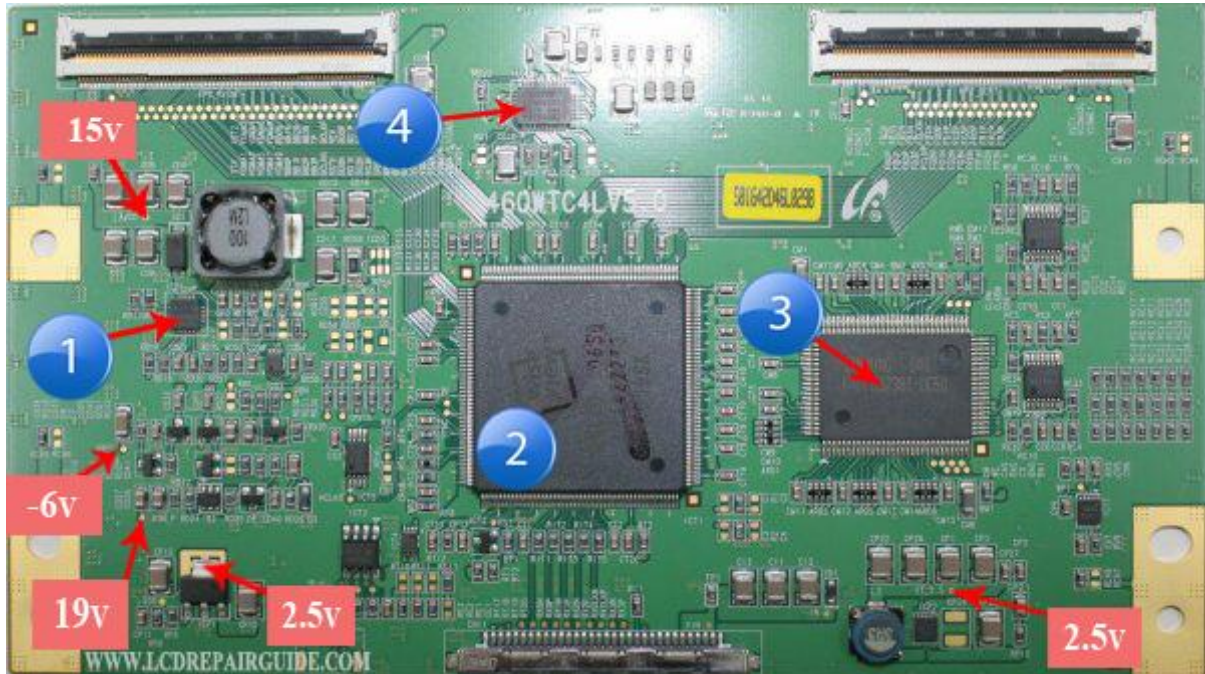


1) IC320= EL7585AIT power management IC. If this IC failure, it will cause the TV No Display.

2) ICT3= LRX4222T3. If this IC failure, it will cause the TV No Display or Full Screen of Vertical Lines/Bars.

3) IC322= EL24006IRZ. If this IC failure, it will cause the TV No Display or Full Screen of Vertical Lines/Bars.

4) ICD1 is a SDRAM memory IC. If this IC failure, it will cause the TV No Display or Display Distortion problem.

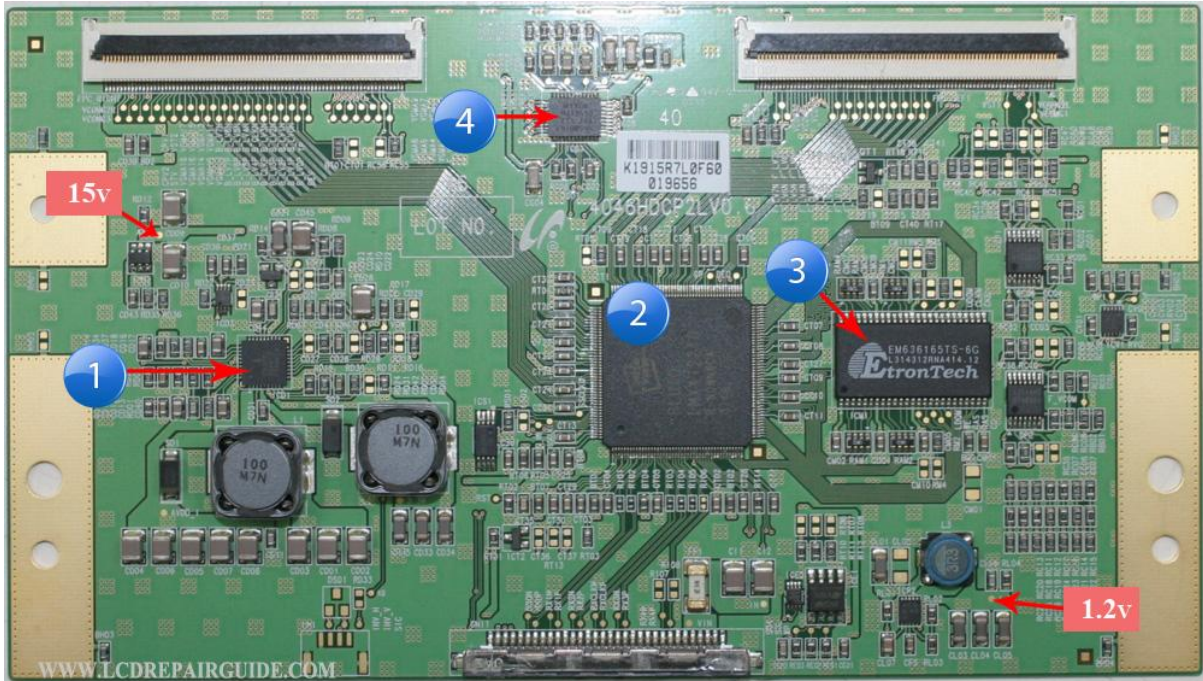
10) T-con Board: 460WTC4LV5.0**LCD Panel Model:** 46 inches Panel**Note:** Vcc input= 5V

1) ICD1= EL7585AIL power management IC. If this IC failure, it will cause the TV No Display.

2) ICT1= LRX4222T3. If this IC failure, it will cause the TV No Display or Display Distortion problem.

3) U2= K4D263238I SDRAM memory IC. If this IC failure, it will cause the TV No Display or White Screen.

4) ICG1= MAX9590. If this IC failure, it will cause the TV No Display or Full Screen of Colorful Vertical Lines/Bars.

11) T-con Board: 4046HDCP2LV0.6**LCD Panel Model:** 46 inches Panel**Note:** Vcc input= 12V

1) ICD1= ISL97650ARIZ is a power management IC. If this IC failure, it will cause the TV No Display.

2) ICT1= LMX4122T0. If this IC failure, it will cause the TV No Display, Display Distortion or Abnormal Display problem.

3) ICM1 is a SDRAM memory IC. If this IC failure, it will cause the TV No Display or Display Distortion problem.

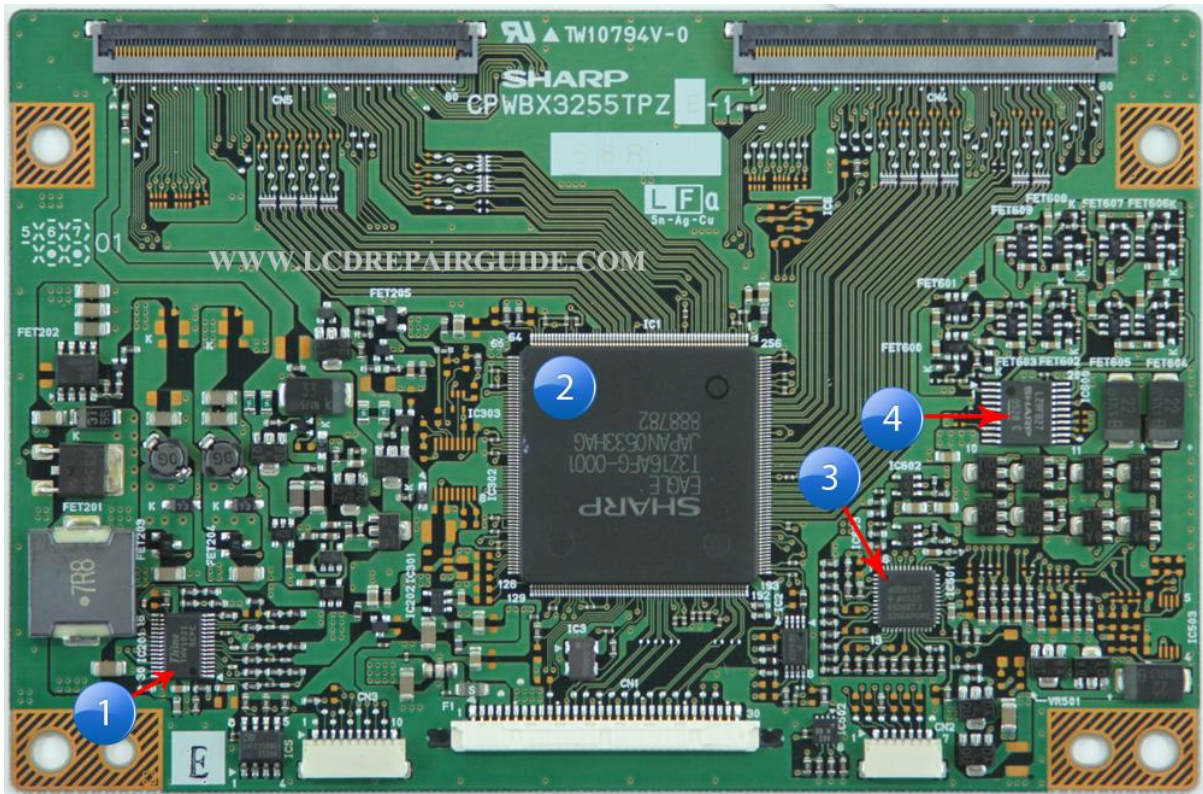
4) ICG1= MAX9590 IC. If this IC failure, it will cause the TV No Display or Full Screen of Vertical Lines/Bars.

SHARP (Sharp Corporation)

1) **T-con Board:** CPWBX3255TPZ

LCD Panel Model: 32 Inches, 37 Inches Panel.

Note: Vcc input= 5V

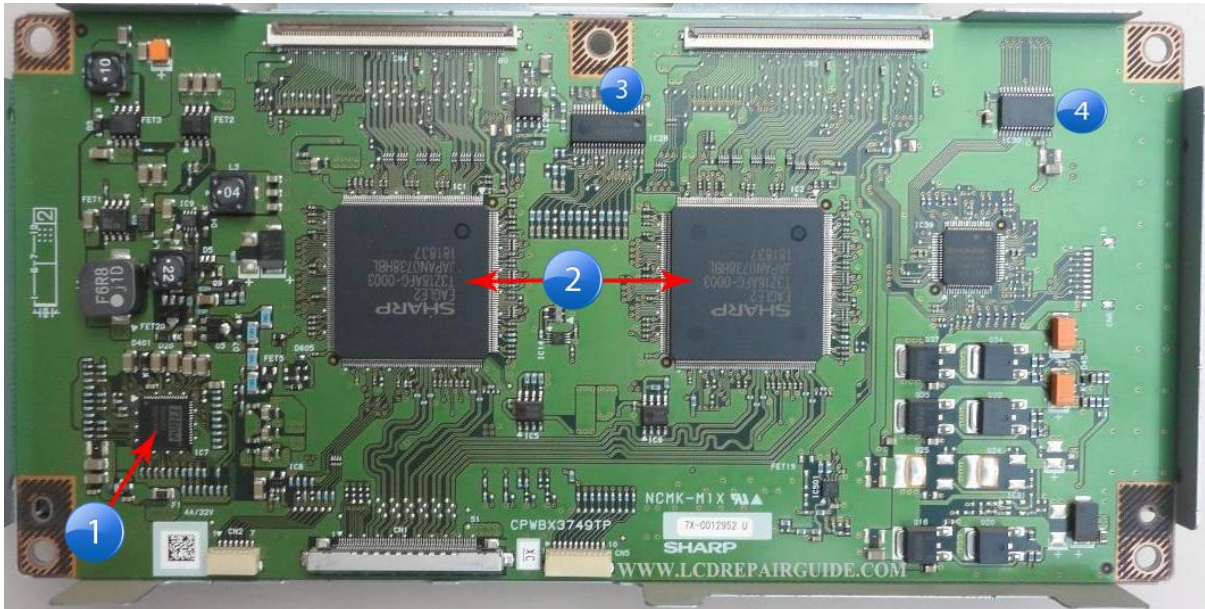


1) IC201= THV1031 power management IC (DC-DC circuit IC). If this IC failure, it will cause the TV No Display.

2) IC1= T3Z16AGF. If this IC failure, it will cause the TV No Display or Full Screen of Colorful Vertical Lines/Bars.

3) IC501= ADD8707 Gamma IC. If this IC failure, it will cause the TV No Display.

4) IC600= LZ9FB27. If this IC failure, it will cause the TV No Display.

2) T-con Board: CPWBX3749TP**LCD Panel Model: 52 inches Panel****Note:**

1) IC7= THV3051 power management IC. If this IC failure, it will cause the TV No Display.

2) IC1 & IC2= T3Z18AFG IC. If this IC failure, it will cause the TV No Display.

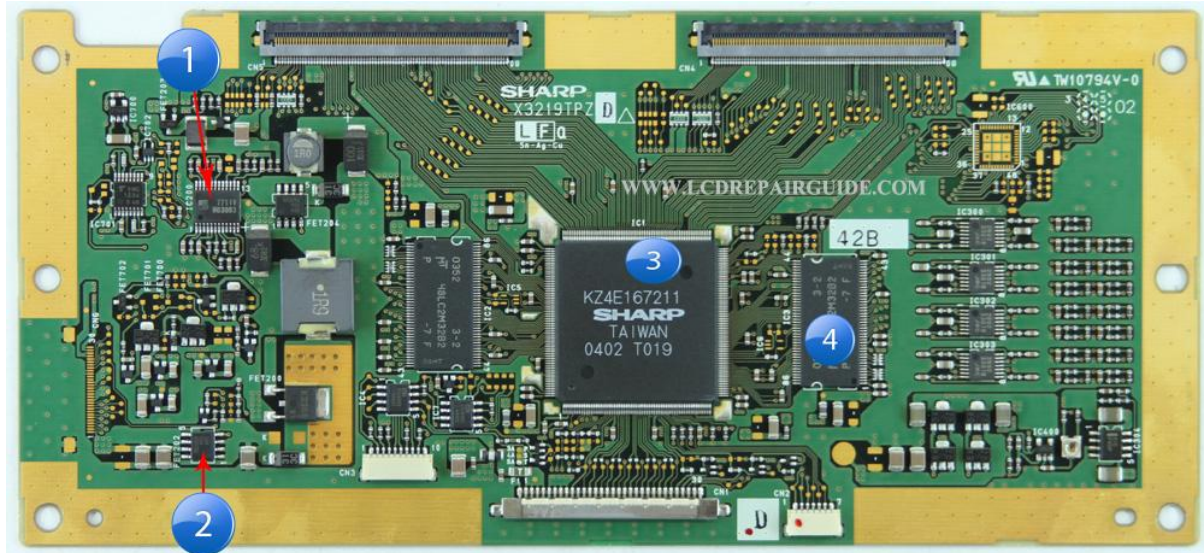
3) IC28= BD8133FV Gamma IC. If this IC failure, it will cause the TV No Display or Full Screen of Vertical Lines/Bars.

4) IC30= TB730A5 IC. If this IC failure, it will cause the TV No Display.

3) T-con Board: X3219TPZ

LCD Panel Model: 37 inches Panel

Note:



1) IC200= 1H04627 power management IC. If this IC failure, it will cause the TV No Display.

2) MOSFET. If this component failure, it will cause the TV No Display.

3) IC1= KZ4E167212. If this IC failure, it will cause the TV No Display.

4) IC2 & IC3= SDRAM memory IC. If this IC failure, it will cause the TV No Display or Display Distortion problem.

4) T-con Board: X3562TP ZE

LCD Panel Model:

Note: Vcc input= 5V



- 1) FET4= A2706. If this component failure, it will cause the TV No Display.
- 2) IC6= THV3051 power management IC (DC-DC circuit IC). If this IC failure, it will cause the TV No Display.
- 3) IC4= EEPROM memory IC. If this IC failure, it will cause the TV No Display or White Screen.
- 4) IC1= T3Z18AGF. If this IC failure, it will cause the TV No Display or Full Screen of Vertical Lines/Bars.
- 5) BD8139EFV Gamma IC. If this IC failure, it will cause the TV No Display.

If you want to buy:

Testing Equipment, Tools and Spare Parts

Please visit to the page here:

<http://www.LCDRepairGuide.com/tools/>

Please visit the Resources Page to get more useful repairing information at:

<http://www.lcd-television-repair.com/newsletter/Recommend.html>

<http://www.LCDRepairGuide.com/Screen-Repair/>

Highly recommended other great related repair information for you:

With all these great repair information, it will help you in troubleshooting and repairing electronic and the other display devices:

 <p>Plasma TV Repair Membership Site</p> <p>Training Manuals And Related Repair Information</p> <p>Kent Liew</p> <p>Plasma TV Repair Membership Site</p> <p>If you're a Plasma TV repairer, then these Plasma TV repair information is you want! Some hard to find information also included inside this Plasma TV Repair Membership Site!</p>	 <p>LCD TV Repair Membership Site</p> <p>Training Manuals And Related Repair Information</p> <p>Kent Liew</p> <p>LCD & LED TV Repair Membership Site</p> <p>This is complete repair information for LCD Television! These repair information included: training manual, service manual, psu schematic diagram, service bulletin, firmware & so on!</p>	 <p>Projection TV Repair Membership Site</p> <p>Training Manuals and Related Repair Information</p> <p>Kent Liew</p> <p>Projection TV Repair Membership Site</p> <p>This membership site included two main repair information, these are Projection TV and Projector!</p>
 <p>V4.0-LCD/LED TV Repair Tips</p> <p>Collection of LCD/LED Television Repair Tips</p> <p>by Kent Liew</p> <p>V4.0-LCD/LED TV Repair Tips</p> <p>A collection of LED/LCD TV Repair Tips ebook. It included the best repair information like, Tv Mainboard Secret Repair Tips and the T-con (Timing Control) Secret Reveal repair information. It is pair of the V3.0 ebook to learn the complete T-con repair info!</p>	 <p>V3.0-LCD/LED TV Repair Tips</p> <p>Collection of LCD/LED Television Repair Tips</p> <p>by Kent Liew</p> <p>V3.0-LCD/LED TV Repair Tips</p> <p>This is a collection of LCD & LED TV Repair Tips ebook. Not only that, if you want to learn what's or how the T-con (Timing Control) works, this is must have ebook to learn. Where the T-con circuit is use in LCD/LED TV & Monitor.</p>	 <p>SMPS Power Supply Repair Guide</p> <p>Troubleshooting & Repairing Switch Mode Power Supplies</p> <p>By Jistine Yong</p> <p>SMPS Power Supply Repair Guide</p> <p>This is one of the great SMPS repair guide I have seen. Where Mr. Jistine Yong had reveal all his secret methods to troubleshooting & repairing the power supplies for the reader. Some of his tactic in this guide, I'm sure you're haven't seen it before. Highly recommended must have!</p>